

Montrachet  
Fine Wine Merchants

2022  
BURGUNDY

# Montrachet Fine Wine Merchants

11 CATHERINE PLACE, WESTMINSTER  
LONDON SW1E 6DX  
020 7821 1337 [office@montrachetwine.com](mailto:office@montrachetwine.com)

## Contents

Chablis	Page	Côte de Beaune cont.	Page
Samuel Billaud	4	Domaine Joseph Pascal	28
Domaine Séguinot-Bordet	6	Domaine Jean-Louis Chavy	30
Domaine Roy	7	Paul Chavy	31
Famille Gueguen	8	Domaine Duc de Magenta	32
Domaine Laurent & Céline Notton	9	Domaine Alain Chavy	33
<b>Mâconnais</b>		Domaine Jacques Carillon	34
Domaine Saumaize-Michelin	10	Domaine Bzikot Père et Fils	35
Florent Rouve	12	Domaine Vincent Latour	36
<b>Chalonnais</b>		Domaine Philippe Bouzereau	38
Domaine Berthenet	13	Domaine Michel Bouzereau et Fils	39
Château de Chamirey	14	Domaine Jean-Jacques Girard	40
Domaine Theulot Juillot	15	Domaine de La Pousse d'Or	42
Domaine Laurent & Romain Pillot	16	<b>Côte de Nuits</b>	
Domaine Ragot	17	Maison Bertrand Ambroise	44
Domaine Claudie Jobard	18	Domaine Lécheneaut	46
<b>Côte de Beaune</b>		Domaine Jacques Cacheux et Fils	48
Domaine Franck Lamargue	19	Domaine des Perdrix	49
Domaine Capuano-Ferreri	20	Domaine Chevillon-Chezeaux	50
Domaine Vincent & François Jouard	21	Château de Laborde	51
Domaine Jean-Marc Pillot	22	Domaine Michel Magnien	52
Domaine Vincent & Sophie Morey	24	Frédéric Magnien	54
Domaine Jean-Charles Fagot	26	Domaine Heresztyn-Mazzini	56
Domaine Gérard Thomas et Filles	27	Domaine Rossignol-Trapet	58

**Terms and Conditions** - All wines are offered both In Bond and Duty Paid. Duty Paid prices are per bottle including VAT (at 20%). In Bond prices are only available when the wine is to be delivered to a bonded warehouse. All wines will be invoiced at the duty paid price unless we are provided with a bonded warehouse account or freight forwarder's details.

Please note that the % abv may be subject to change for the cuvées which are not yet bottled.

**Availability and deliveries** - Some wines are available for immediate delivery, the remainder will be shipped to the UK between now and December 2024. Deliveries are free for orders of 36 bottles or more within mainland England and Wales. For smaller orders there is a carriage charge of £ 20 inc VAT within mainland England and Wales. Deliveries to Scotland and Overseas are charged at cost.

**How to Order** - Please email your order to [office@montrachetwine.com](mailto:office@montrachetwine.com) or ring us on 020 7821 1337

**Payment** - We accept payment by bank transfer, cheque (made payable to Montrachet) and Debit card. Debit cards will be charged when your invoice is raised to confirm the stock at the time of ordering. Montrachet is a trading division of Charles Taylor Wines Ltd.

E & OE December 2023

# 2022 BURGUNDY

Ripe, aromatic whites - Sumptuous, fresh reds

After one of the warmest, driest summers on record, Burgundy has produced some of the freshest, most vividly fruity wines ever. The succulent textures and intense flavours make 2022 a hugely successful vintage where good volume and high quality go hand in hand.

After a wet winter, an unremarkable spring enabled the vines to avoid any frost damage and good weather in May allowed the flowering to pass off successfully, guaranteeing an early harvest. June saw a return to mixed weather culminating in a series of thunderstorms including hail and heavy rain at the end of the month. For many vineyards, that was the last rain they would see. July and August were unremittingly hot and dry but the water reserves enabled most vines to avoid undue stress and relatively cool nights allowed the grapes to retain fresh flavours and adequate levels of acidity.

By the second half of August the grapes were approaching full maturity and most growers opted to pick promptly to avoid the danger of over-ripeness. In the Côte d'Or, most of the white grapes were gathered in the last week of August and first week of September with the red wine harvest following immediately afterwards. Most growers were expecting a bumper crop after the successful flowering but the dry summer reduced the amount of juice in the grapes and the eventual yields in most places were only a little above average. The quality, however, is superb. The whites are fresh and aromatic with plush textures, rich, intense flavours and fine structure. They will be delicious young but also age gracefully. They have the vitality and concentration of other, recent, successful white wine vintages such as 2017 and 2020.

The reds, if anything, are even more impressive. It was easy for wine-makers to extract colour, flavour and tannin from such perfectly ripe, healthy and concentrated fruit. With the experience gained in the hot vintages of 2018, 2019 and 2020, most producers have mastered the art of picking promptly and speedily to retain freshness and acidity and extracting only the finest, ripest tannins. They have been rewarded with a magnificent range of wines that, in terms of recent vintages, combine the power and concentration of hot years such as 2018 and 2020 with the freshness and elegance of 2016 and 2017. In short, it is a great vintage for red wines that will rank with the finest of the past 25 years: 1999, 2005, 2010, 2015 and 2019.

A handwritten signature in dark ink that reads "Charles Taylor". The signature is written in a cursive, flowing style. Below the signature is a long, thin, curved line that tapers at both ends, resembling a flourish or a stylized underline.

Charles Taylor M.W.

# Samuel Billaud



A perfectionist in both the vineyards and cellars, Samuel is consistently producing the finest wines in Chablis, the equal to Jean-Marie and Bernard Raveneau but at a fraction of the price.

After a warm, dry summer in 2022, Samuel picked promptly from 25th August to 5th September. The fruit was in magnificent condition with a perfect balance of sugar and acidity. The 2022s are another brilliant range of wines, combining rich fruit flavours and generous textures with striking purity and minerality.

As usual, all the wines were given extended ageing on the fine lees for between 9 and 18 months in a mixture of 450 litre oak *demi-muids* and stainless steel vats.

White	Bin no.	CASE SIZE	% abv	£ per bottle DP Inc VAT	£ per case IN BOND
<b>Chablis</b>	<b>SB1</b>	6x75cl	12.5	31.00	139.00

*Samuel makes this brilliant wine from three plots of vines; Bas Chapelots just below premier cru Montée de Tonnerre which gives richness and body, Les Pargues near the village of Préhly which contributes freshness and minerality and Les Cartes, between premiers crus Vaillons and Montmains, with its lovely fruit and generous texture. Splendid quality with mouthwatering fruit, a succulent texture with a touch of salinity and a long aftertaste. Drink 2024-2029.*

<b>Chablis 1er Cru Montmains</b>	<b>SB2</b>	6x75cl	13	54.00	254.00
----------------------------------	------------	--------	----	-------	--------

*One of the ripest, fruitiest wines in the cellar. The deep, clay soil gives a generous Chablis that combines rich fruit with fine minerality. Already delicious but has the balance to age gracefully. Drink 2024-2030.*

<b>Chablis 1er Cru Fourneaux</b>	<b>SB3</b>	6x75cl	13	54.00	254.00
----------------------------------	------------	--------	----	-------	--------

*Less well-known but superbly placed premier cru adjacent to Mont de Millieu in the village of Fleys. South-facing so has a ripe, sunny disposition with a succulent texture and a rich, generous finish whilst retaining the minerality of the best right bank premiers crus. Drink 2024-2030.*

<b>Chablis 1er Cru Vaillons Vieilles Vignes</b>	<b>SB4</b>	6x75cl	13	56.00	264.00
---	------------	--------	----	-------	--------

*From two parcels of old (60+ years) vines in this well-known premier cru to the south of the town of Chablis. Crisp and fresh with wonderful purity of fruit - quintessential Chablis. Drink 2024-2031.*

<b>Chablis 1er Cru Butteaux</b>	<b>SB5</b>	6x75cl	13	56.00	264.00
---------------------------------	------------	--------	----	-------	--------

*From a single plot at the top of Montmains. The distinctive, clay soil and fermentation in 7-year old demi-muids give a dense, powerful wine with honeyed fruit and a dash of spice. Drink 2024-2030.*

White	Bin no.	CASE SIZE	% abv	£ per bottle DP Inc VAT	£ per case IN BOND
<b>Chablis 1er Cru Mont de Milieu</b>	<b>SB6</b>	6x75cl	13	58.00	274.00
<i>Splendid premier cru which lies on the right bank of the River Serein just along from the grands crus. Vinification is 80% in stainless steel vats and 20% in 450 litre oak demi-muids. Rich and complex with wonderful purity of fruit, crisp acidity and a fine, mineral finish. Drink 2025-2032.</i>					
<b>Chablis 1er Cru Séchet Vieilles Vignes</b>	<b>SB7</b>	6x75cl	13	62.00	294.00
<i>Séchet is the finest part of Vaillons and Samuel owns a plot of 90 year old vines planted by his great-grandfather on 161-49 rootstock. Vinified in stainless steel vats, this has wonderful precision and vitality. A brilliant example of pure, unoaked chardonnay. Drink 2025-2032.</i>					
<b>Chablis 1er Cru Fourchaumes</b>	<b>SB8</b>	6x75cl	13	62.00	294.00
<i>One of the best-known premiers crus at the western end of the grands crus. South-west facing, it captures all the afternoon sun and gives a rich, opulent wine with a persistent aftertaste. Drink 2025-2031.</i>					
<b>Chablis 1er Cru Montée de Tonnerre</b>	<b>SB9</b>	6x75cl	13	62.00	294.00
<i>80% vinified in stainless steel and 20% in demi-muids. Samuel owns vines in two plots at different altitudes within Montée de Tonnerre; Chapelots near the base and Triangle higher up which, when blended together, give a rich, concentrated wine that has both depth and minerality. Grand cru quality and great ageing potential. Drink 2025-2032.</i>					
<b>Chablis Grand Cru Bougros</b>	<b>SB10</b>	6x75cl	13.5	112.00	544.00
<i>Partly vinified in stainless steel and partly in oak demi-muids, this is fine and harmonious with beautiful, honeyed fruit complemented by crisp acidity and a mouthwatering aftertaste. Drink 2025-2032.</i>					
<b>Chablis Grand Cru Blanchots</b>	<b>SB11</b>	6x75cl	13.5	115.00	559.00
<i>Blanchots lies adjacent to Les Clos at the eastern extremity of the grands crus. Vinified in both 450 litre demi-muids and traditional 228 litre Burgundy pièces, this is intense and powerful with a close-knit texture, ripe, almost honeyed fruit and a touch of spicy oak. Drink 2025-2032.</i>					
<b>Chablis Grand Cru Vaudésir</b>	<b>SB12</b>	6x75cl	13.5	115.00	559.00
<i>Samuel owns two plots in Vaudésir, on opposite sides of the valley and which ripen a few days apart. Aged in demi-muids, this is a fine, complex, harmonious wine of great breed and concentration. Fresh and floral on the nose and builds in the mouth to a fine finish. Drink 2026-2033.</i>					
<b>Chablis Grand Cru Les Clos</b>	<b>SB13</b>	6x75cl	13.5	122.00	594.00
<i>The domaine made a single demi-muid of this magnificent wine in 2022. Dense and powerful with a wonderful, harmonious structure and spectacular fruit that rises to a glorious finish. Drink 2026-2034.</i>					



Jean-François Bordet

# Domaine Séguinot-Bordet

Jean-François Bordet runs this splendid, hugely successful, family estate that can trace its roots in the village of Maligny back to 1590. The domaine now extends to over 20 hectares on the right bank of the River Serein where the high proportion of kimmeridgian limestone gives the wines additional minerality and intensity.

2022 was a great success. After a splendid warm, dry and sunny summer, the perfectly ripe and healthy grapes were fermented in stainless steel vats to preserve the maximum of fruit, followed by 6-9 months ageing on the fine lees to achieve additional richness and complexity.

	Bin no.	CASE SIZE	% abv	£ per bottle DP Inc VAT	£ per case IN BOND
White					
<b>Petit Chablis (screwcap)</b>	<b>BO1</b>	6x75cl	12.5	18.00	74.00
<i>From vines on the plateau above the village of Maligny at the northern end of premier cru Fourchaume. The majority of the vines were planted in the 1990s and are now in their prime, giving splendid wine. This is crisp and fresh with delicious, mouthwatering fruit and excellent minerality. Drink 2024-2026.</i>					
<b>Chablis (screwcap)</b>	<b>BO2</b>	6x75cl	12.5	20.00	84.00
<i>The domaine owns several plots on the hillsides in and around Maligny. Rich and intense with wonderful purity of fruit, a lovely, lemony edge and a long aftertaste. Drink 2024-2027.</i>					
<b>Chablis 1er Cru Fourchaume</b>	<b>BO3</b>	6x75cl	13	29.00	129.00
<i>Fourchaume is one of the finest and largest premiers crus running from the western end of the grands crus most of the way to the village of Maligny. The south-west facing slopes give a rich, sunny wine whilst retaining excellent freshness and minerality thanks to the Kimmeridgian limestone soil. Drink 2024-2028.</i>					
<b>Chablis Grand Cru Vaudésir</b>	<b>BO4</b>	6x75cl	13	55.00	259.00
<i>Jean-François vinifies this magnificent grand cru in three 500 litre casks (one 1 year old, one 2 year old, one 3 year old) made by Tonnellerie Cavin in northern Burgundy. Rich and aromatic with a sumptuous texture and carefully judged oak. Drink 2025-2029.</i>					
<b>Chablis Grand Cru Preuses</b>	<b>BO5</b>	6x75cl	13	55.00	259.00
<i>This is vinified in a single 1000 litre stainless steel egg-shaped vat. Beautiful, pure fruit without any oak influence. Finishes crisp and long. Drink 2025-2029.</i>					

# Domaine Roy

Karine Roy, together with her father Claude and cousin David, continue to make great wine from the 18 hectares they farm on the right bank of the River Serein in the heart of Chablis.

Their wonderful 3.5 ha plot of Bougros is one of the largest holdings throughout the Grands Crus. All their wines are vinified in stainless steel and then aged on the lees for 9-12 months before bottling. Classic Chablis, vibrant and pure with fine structure and concentration.



Karine & Claude Roy

White	Bin no.	CASE SIZE	% abv	£ per bottle DP Inc VAT	£ per case IN BOND
<b>Chablis Coteaux de Fontenay</b>	<b>RY1</b>	6x75cl	12.5	21.00	89.00
<i>The Roy family's finest Chablis vineyards lie near the village of Fontenay adjacent to premier cru Fourchaume. The steep, south-facing vineyard gives a rich, intense wine that has beautiful, ripe fruit allied to fine acidity. Fermented and aged for 9 months in stainless steel vats to preserve the maximum of freshness and vitality. Drink 2024-2026.</i>					
<b>Chablis 1er Cru Fourchaume</b>	<b>RY2</b>	6x75cl	13	29.00	129.00
<i>The best-known premier cru in Chablis with a sunny, south-west exposure. Ripe and aromatic with excellent fruit and fine tension. Drink 2024-2027.</i>					
<b>Chablis 1er Cru Vaurorent</b>	<b>RY3</b>	6x75cl	13	30.00	134.00
<i>Lying adjacent to grands crus Preuses and Bougros, Vaurorent is capable of giving wine of similar quality. This is intense and harmonious with fine purity of fruit and a long, crisp finish. Drink 2024-2028.</i>					
<b>Chablis Grand Cru Bougros Vieilles Vignes</b>	<b>RY4</b>	6x75cl	13	47.00	219.00
<i>The domaine owns a magnificent 3.5 hectare parcel of this famous grand cru. The old vines, planted in 1963, give a magnificent wine, rich and aromatic with a touch of honey and a lingering aftertaste. Drink 2024-2028.</i>					
<b>Chablis Grand Cru Preuses</b>	<b>RY5</b>	6x75cl	13	51.00	239.00
<i>The Roy vines lie in the heart of the grand cru and their 0.5 ha plot gives one of the finest examples. Intense flavour and a close-knit texture point to a brilliant future. Drink 2024-2029.</i>					

# Famille Gueguen

Céline and Frédéric Gueguen both come from local Chablis families. Céline is the daughter of Jean-Marc Brocard and worked with her father before setting up her own estate with her husband Frédéric in 2013. He had previously worked both with Jean-Marc Brocard and Jean Durup, two of the largest estates in Chablis.

Céline and Frédéric now have 36 hectares of vines in and around Chablis which are currently being converted to organic viticulture together with a winery in the village of La Chapelle Vaupelteigne.



White

Bin no.	CASE SIZE	% abv	£ per bottle DP Inc VAT	£ per case IN BOND
<b>GU1</b>	6x75cl	13	19.00	79.00

## Chablis

*The Gueguens own vineyards in the villages of Préhy and Chichée, both just to the south of the town of Chablis on the left bank of the River Serein. Fermented and aged for nine months in stainless steel vats, this is rich and fresh with mouthwatering fruit and thrilling acidity. Finishes long and ripe. Drink 2024-2027.*





# Domaine Laurent & Céline Notton

Laurent & Céline Notton

Laurent and Céline Notton established their 16 hectare estate in 2005. Initially, they sold all their production in bulk to the Beaune *négociants* but, in recent years, they have increasingly turned to bottling the wine themselves. The estate is centred on the village of Chichée which lies on the banks of the River Serein 3 km upstream from the town of Chablis.

Laurent believes in waiting for the grapes to attain full ripeness before harvesting and the majority of the wines, including their splendid premier cru Vaucoupin, are vinified in stainless steel vats to preserve the maximum of fruit and vitality.



White

## Chablis

*From vineyards in the village of Chichée, this has a fabulous balance of ripe, honeyed fruit and crisp acidity. Fresh and aromatic on the nose with a delightful, succulent texture and a vibrant, lemony finish. Already delicious but will age gracefully in the medium term. Drink 2024-2027.*

## Chablis 1er Cru Vaucoupin

*The domaine owns 1.5 ha of vines in this lesser-known but well-sited premier cru. Situated on the right bank of the river Serein just upstream from Mont de Milieu, it shares the same characteristics of precision and minerality. The 35 year old vines give depth and concentration to this excellent value premier cru. Drink 2024-2027.*

Bin no.	CASE SIZE	% abv	£ per bottle DP Inc VAT	£ per case IN BOND
<b>NO1</b>	6x75cl	12.5	20.00	84.00
<b>NO2</b>	6x75cl	13	27.00	119.00



# Domaine Saumaize-Michelin

Roger and Christine Saumaize have handed the day to day running of the estate to their children Vivien and Lisa.

Vivien has been making the wine since 2018 and continues the meticulous approach of his father whilst introducing some small but significant new ideas and techniques such as the creation of a cold chamber to chill the fruit and the fermentation of a small part of the crop in 56 litre glass globes.



White

Bin no.	CASE SIZE	% abv	£ per bottle DP Inc VAT	£ per case IN BOND
---------	-----------	-------	----------------------------	-----------------------

## Mâcon Villages

<b>SM1</b>	6x75cl	13.5	20.00	84.00
------------	--------	------	-------	-------

*From vines in the village of Bussières just outside the Pouilly-Fuissé appellation. Vinified principally in stainless steel vats, this is fresh and vibrant with a lovely, juicy texture and a long, crisp finish.*

*Drink 2024-2026.*

## Saint Véran

<b>SM2</b>	6x75cl	13.5	23.00	99.00
------------	--------	------	-------	-------

*100% barrel-fermented, this comes from two vineyards in Davayé and Prissé. Rich and opulent with spicy oak and a long, toasty aftertaste.*

*Drink 2024-2027.*

## Saint Véran En Pommard

<b>SM3</b>	6x75cl	13.5	26.00	114.00
------------	--------	------	-------	--------

*A new wine from a fine, north-east facing vineyard at the foot of the Roche de Solutré which gives a wine with great tension and minerality. Crisp and intense with impressive length on the finish. Drink 2025-2028.*

## Viré-Clessé

<b>SM4</b>	6x75cl	13	27.00	119.00
------------	--------	----	-------	--------

*From vines in Clessé, further north in the Mâconnais, where the climate is cooler and the grapes ripen later. Fresh and fruity with a delightful liveliness and an open, inviting structure. Drink 2024-2027.*

## Mâcon-Vergisson Sur La Roche

<b>SM5</b>	6x75cl	13.5	27.00	119.00
------------	--------	------	-------	--------

*Sur La Roche is one of Vergisson's finest vineyards and most of it is classified as Pouilly-Fuissé 1er Cru. The higher, more northerly section is only allowed the Mâcon-Vergisson appellation but still makes a rich, aromatic, generous wine that is one of the best value wines of the region. Drink 2025-2028.*

White	Bin no.	CASE SIZE	% abv	£ per bottle DP Inc VAT	£ per case IN BOND
<b>Saint Véran Les Crèches</b>	<b>SM6</b>	6x75cl	13.5	28.00	124.00
<i>The domaine's finest parcel of vines in the Saint Véran appellation. Rich and powerful with beautiful, honeyed fruit, a touch of oak and fine bite on the finish. Drink 2025-2028.</i>					
<b>Pouilly-Fuissé Pentacrine</b>	<b>SM7</b>	6x75cl	13.5	29.00	129.00
<i>A fine cuvée selected from plots with a higher proportion of chalk in the soil. 40% of the juice is fermented in larger, 350 litre demi-muids to give a more subtle oak influence. Crisp and fresh with fine bite and minerality. Drink 2025-2029.</i>					
<b>Pouilly-Fuissé Les Tiliers</b>	<b>SM8</b>	6x75cl	13.5	30.00	134.00
<i>A small cuvée of beautifully balanced wine that combines intense, pure fruit with a rich texture and a long, crisp finish. Drink 2025-2029.</i>					
<b>Pouilly-Fuissé Aux Charmes</b>	<b>SM9</b>	6x75cl	13.5	32.00	144.00
<i>From the Ronchevats section of the better-known climat of 'Aux Charmes'. There is more clay in the soil which gives a firm, full-bodied wine of great concentration and intensity. Drink 2025-2029.</i>					
<b>Pouilly-Fuissé Les Courtelongs</b>	<b>SM10</b>	6x75cl	13.5	32.00	144.00
<i>A vineyard that, as a result of its high altitude and north-facing exposure, was denied premier cru status, but which makes fabulous, crisp, aromatic Pouilly-Fuissé. Lean and taut with excellent poise and minerality. Drink 2025-2030.</i>					
<b>Pouilly-Fuissé 1er Cru La Maréchaude</b>	<b>SM11</b>	6x75cl	13.5	40.00	184.00
<i>One of the most precocious vineyards that is often harvested first. Ripe and open with excellent acidity and minerality. Drink 2025-2030.</i>					
<b>Pouilly-Fuissé 1er Cru Sur La Roche</b>	<b>SM12</b>	6x75cl	13.5	41.00	189.00
<i>A great success in 2022. A wonderful, harmonious wine with fine purity of fruit, a lively texture and long aftertaste. Drink 2025-2030.</i>					



# Florent Rouve

A brilliant wine-maker who divides his time between the two estates that he owns in the Mâconnais and the Jura. His Mâcon cellar is in the village of Davayé in the heart of the Saint Véran appellation where he fashions an exemplary range of white wines from all the major appellations of southern Burgundy.

The 2022s were picked promptly at the end of August and fermented and aged for 9-15 months in small oak barrels of which 10-25% were new.



White

Bin no.	CASE SIZE	% abv	£ per bottle DP Inc VAT	£ per case IN BOND
---------	-----------	-------	-------------------------	--------------------

## **Mâcon La Roche Vineuse Soleil Levant Vieilles Vignes**

<b>FR1</b>	6x75cl	13	22.00	94.00
------------	--------	----	-------	-------

*A splendid, east-facing site that captures all the morning sun but doesn't get too hot in the afternoon, an advantage in warm summers such as 2022. The grapes retain excellent acidity and this is crisp and vibrant with lovely, honeyed fruit, a hint of oak and a long, mineral finish. Drink 2024-2026.*

## **Viré-Clessé Les Vercherres**

<b>FR2</b>	6x75cl	13	26.00	114.00
------------	--------	----	-------	--------

*A north-east facing vineyard which gives a wine with a distinct, mineral edge. Rich and intense with thrilling acidity and lovely bite on the finish. Drink 2024-2026.*

## **Saint Véran En Crèches**

<b>FR3</b>	6x75cl	13	27.00	119.00
------------	--------	----	-------	--------

*Florent's finest Saint Véran from a magnificent vineyard in the village of Davayé. Rich and intense with concentrated, peachy fruit, a generous texture and a persistent aftertaste. Drink 2024-2026.*

## **Pouilly-Fuissé En Bulands**

<b>FR4</b>	6x75cl	13	35.00	159.00
------------	--------	----	-------	--------

*A new wine for Florent from a cool, north-west facing climat at high altitude in the commune of Vergisson. Rich yet fresh, this has vibrant fruit and fine tension. Drink 2024-2027.*

## **Pouilly-Fuissé 1er Cru Sur La Roche Vieilles Vignes**

<b>FR5</b>	6x75cl	13	38.00	174.00
------------	--------	----	-------	--------

*One of the finest of the new premiers crus in Pouilly-Fuissé. Located on the Roche of Vergisson where the limestone soil gives a wine with both richness and minerality. Drink 2024-2027.*

# Domaine Berthenet

The Berthenets have been growing grapes in Montagny-lès-Buxy, in the heart of the Chalonais, for over 400 years. François Berthenet has been in charge for the past decade and has refined the style, producing wines with a wonderful balance of fresh, honeyed fruit and crisp acidity. New oak is used judiciously on some of the cuvées with the introduction of an increasing proportion of larger, 500 litre *demi-muids*.



François Berthenet

White

Bin no.	CASE SIZE	% abv	£ per bottle DP Inc VAT	£ per case IN BOND
---------	-----------	-------	----------------------------	-----------------------

## Montagny Tête de Cuvée

<b>BE1</b>	6x75cl	13	20.00	84.00
------------	--------	----	-------	-------

*François vinifies this selection of his finest parcels exclusively in stainless steel vats to preserve the maximum of fruit and freshness. Has real zip and intensity with a winning combination of ripe fruit and crisp acidity. Drink 2024-2026.*

## Montagny Les Coères

<b>BE2</b>	6x75cl	13	22.00	94.00
------------	--------	----	-------	-------

*Les Coères is one of the finest premiers crus in Montagny but part of the climat was inexplicably not classified as such when the appellation was created in the 1930s. Fermented and aged for 9 months in oak barrels, this is rich and spicy with lovely, honeyed fruit and just the right amount of oak. Drink 2024-2026.*

## Montagny 1er Cru Saint Morille

<b>BE3</b>	6x75cl	13	25.00	109.00
------------	--------	----	-------	--------

*Lying high (375 metres) on the slope above the village of Montagny-Lès-Buxy, the cool climate and stony soil give a crisp, intense, mineral wine. Unoaked, this has fine purity of fruit and a long, crisp aftertaste. Drink 2024-2027.*

## Montagny 1er Cru Les Platières

<b>BE4</b>	6x75cl	13	25.00	109.00
------------	--------	----	-------	--------

*Lower on the hillside this is broader flavoured and sees a proportion of barrel fermentation. Ripe and concentrated with gentle, well-integrated oak. Drink 2024-2027.*

## Montagny 1er Cru Vieilles Vignes

<b>BE5</b>	6x75cl	13	26.00	114.00
------------	--------	----	-------	--------

*A selection of the oldest (60+ years) vines of the domaine, this is all barrel-fermented and has magnificent depth and concentration. A lovely, harmonious wine. Drink 2024-2027.*

# Château de Chamirey

Château de Chamirey, owned by the Devillard family, is one of the largest estates in Mercurey. The domaine comprises 37 hectares of vines, most of which are premier cru including the monopole of Clos des Ruelles. Based in the south-eastern sector of the appellation and blessed with a wide variety of chalk as well as clay soils, the Château de Chamirey is unusual in producing fine white as well as red Mercurey.



Amaury, Aurore & Bertrand Devillard

White	Bin no.	CASE SIZE	% abv	£ per bottle DP Inc VAT	£ per case IN BOND
<b>Mercurey Blanc</b>	<b>CH1</b>	6x75cl	13	30.00	134.00
<i>The Devillards own seven plots of chardonnay in the south-east of the appellation on a variety of chalk, clay and sandy soils that are used to make this delicious, aromatic, generous wine. Vinified 60% in stainless steel vats and 40% in 400 litre French oak barrels, it's brilliantly fresh and fruity with a succulent texture and crisp finish. Drink 2025-2027.</i>					
<b>Mercurey En Pierrelet</b>	<b>CH2</b>	6x75cl	13.5	35.00	159.00
<i>A 3 hectare parcel with a distinctive stony soil on a limestone base. The best fruit is vinified separately in 400 litre casks. A lovely, concentrated wine with ripe, honeyed fruit and a touch of oak balanced by excellent acidity. Drink 2025-2028.</i>					
Red					
<b>Mercurey Rouge</b>	<b>CH3</b>	6x75cl	14	29.00	129.00
<i>This fine, harmonious wine includes part of the production from three of the estate's premiers crus (Sazenay, Clos L'Evêque and Champs Martin) which explains its consistently high quality. Aged both in stainless steel vats and oak barrels, this is a ripe, generous wine full of crunchy, red fruits and with a fresh, juicy texture. Drink 2026-2029.</i>					
<b>Mercurey 1er Cru Clos du Roi</b>	<b>CH4</b>	6x75cl	14.5	42.00	194.00
<i>The Devillards, with 3 of the 11 hectares, are the largest land-owner in this famous premier cru. A forward, ripe, aromatic wine bursting with red and black fruits together with a touch of spicy oak. Fresh and harmonious with silky tannins and a long finish. Drink 2026-2030.</i>					
<b>Mercurey 1er Cru Clos des Ruelles</b>	<b>CH5</b>	6x75cl	14.5	44.00	204.00
<i>A monopole of the domaine comprising 2.5 hectares of 40 year old vines planted on a distinctive, red, clay soil due to a high content of iron oxide. Profound, black cherry and blackberry fruit on the nose with a dense, close-knit texture, firm but ripe tannins and an impressive, persistent aftertaste. Drink 2027-2032.</i>					

# Domaine Theulot Juillot



Most of Jean-Claude and Nathalie Theulot's 10 hectares of vines were acquired in 1987 when she inherited her share of the Juillot family estate. All the fruit is hand harvested, destemmed and given a short, cold pre-fermentation maceration before fermentation at 27C-30C in stainless steel vats followed by 12 months ageing in oak barrels. After a tiny, frost affected 2021 crop, the vines gave generously in 2022 with yields of 40-45 hl/ha and are some of the finest wines the Theulots have ever produced.

Red	Bin no.	CASE SIZE	% abv	£ per bottle DP Inc VAT	£ per case IN BOND
<b>Mercury Vieilles Vignes</b>	<b>TJ1</b>	6x75cl	13.5	29.00	129.00
<i>Jean-Claude Theulot takes the oldest vines in three climats (Clos Laurent, Vaux and Montelons) and vinifies them separately to make this rich, generous wine that rivals many premiers crus in quality. 80% of the wine is aged in 228 litre French oak barrels (of which 20% are new) with the remaining 20% kept in stainless steel vats to retain the maximum of fruit. Rich and generous with vivid, red and black fruits and a touch of spicy oak. Drink 2026-2030.</i>					
<b>Mercury 1er Cru Champs Martins</b>	<b>TJ2</b>	6x75cl	13.5	33.00	149.00
<i>A fine premier cru that lies on the hillside behind the domaine's cellars. A lovely, harmonious wine that combines vivid fruit with ripe tannins and fresh acidity. Aged for 12 months in oak barrels of which 25% are new. Drink 2026-2031.</i>					
<b>Mercury 1er Cru Combins</b>	<b>TJ3</b>	6x75cl	13.5	34.00	154.00
<i>A rich, firm, structured wine from this excellent premier cru that lies adjacent to Champs Martins but has a deeper, heavier soil. Backward at present but with fine ageing potential. Drink 2027-2032.</i>					
<b>Mercury 1er Cru La Cailloute</b>	<b>TJ4</b>	6x75cl	13.5	36.00	164.00
<i>La Cailloute lies immediately above Les Combins and is a monopole of the domaine. A beautiful wine that combines the freshness and fruit of Champs Martins with the structure of Combins. Rich and generous, this is a wonderful, complete wine that shows how good the wines of Mercury can be. Drink 2027-2032.</i>					



# Domaine Laurent & Romain Pillot

The Pillot family have been making wine in Mercurey for 150 years. Today Laurent, together with his son Romain who joined in 2018, are the 5th and 6th generations to run the 17 hectare family domaine.

The Mercurey 1er Cru En Sazenay lies in the heart of the appellation on a south-east facing slope and is planted with 70 year-old vines. Vinification is traditional. All the fruit is destemmed, fermentation is in cement vats with subsequent ageing in French oak barrels for twelve months.

Red	Bin no.	CASE SIZE	% abv	£,per bottle DP Inc VAT	£,per case IN BOND
<b>Bourgogne Pinot Noir La Pièce Carrée</b>	<b>PI1</b>	6x75cl	13.5	19.00	79.00
<i>The domaine owns a substantial 9 hectares of vines with the appellation Bourgogne. La Pièce Carrée, which covers just one hectare, is the finest and is kept apart. Vinified principally in stainless steel vats, it has wonderful, pure red cherry and raspberry fruit, a soft, succulent texture and a silky finish. Drink 2025-2028.</i>					
<b>Mercurey Rouge</b>	<b>PI2</b>	6x75cl	13	26.00	114.00
<i>The Pillots sell half their crop in bulk to the big Burgundy négociants which enables them to retain just the best wines. Matured in one to six year old barrels this is a lovely example of Mercurey with delicious, red fruits and spice on the nose, carefully extracted tannins and a beguiling, fresh aftertaste. Drink 2026-2029.</i>					
<b>Mercurey 1er Cru En Sazenay</b>	<b>PI3</b>	6x75cl	13	33.00	149.00
<i>Dense and concentrated with a touch of spice and vanilla from 12 months maturation in 30% new oak casks. A lovely, complex wine with a lingering, sweet finish. Drink 2027-2030.</i>					





Nicolas Ragot

## Domaine Ragot

One of the finest and most progressive estates in Givry. Nicolas took over from his father, Jean-Paul, in 2008 and has since expanded the estate to 14 hectares, eliminated the use of chemical herbicides and pesticides, extended the cellars and introduced the use of 320 litre *amphorae* for maturing a part of the wines.

Nicolas picked early in 2022, starting on 20th August in order to retain the maximum of freshness and vitality. This is a brilliant range of rich, complete wines, brimming with crunchy, red fruits, supple tannins and fine acidity.

Red

Bin no.	CASE SIZE	% abv	£ per bottle DP Inc VAT	£ per case IN BOND
---------	-----------	-------	-------------------------	--------------------

### Givry Vieilles Vignes

<b>RA1</b>	6x75cl	13.5	30.00	134.00
------------	--------	------	-------	--------

*From the oldest vines of the domaine with 25% of the fruit fermented as whole bunches. Rich and spicy with masses of red cherry and blackberry fruit. Aged in Berthomieu barrels to enhance the warm, succulent texture. A delicious, open wine, vividly fruity but with the depth and structure to age splendidly. Drink 2025-2030.*

### Givry 1er Cru Clos Jus

<b>RA2</b>	6x75cl	14	33.00	149.00
------------	--------	----	-------	--------

*Clos Jus lies at the northern end of the appellation in the commune of Dray Le Fort. This is a warmer site and gives a rich, opulent wine with blackcurrant fruit and a touch of spice. Drink 2026-2031.*

### Givry 1er Cru La Grande Berge

<b>RA3</b>	6x75cl	14	33.00	149.00
------------	--------	----	-------	--------

*Nicolas owns a magnificent 2.14 ha section of this fine premier cru that lies just above the village of Poncey in the south of the appellation. 10% of the wine is aged in cement amphorae with the rest in traditional oak barrels of which 33% are new. Rich and generous with firm but ripe tannins and excellent acidity. Drink 2026-2031.*

# Domaine Claudie Jobard

Claudie Jobard's father, Roger, developed this estate in the 1970s, buying and planting land in Rully. Most of the vines date from this period and are now 45+ years old and producing glorious wine.

Claudie continues to run the Jobard family nursery business supplying grafted vines to growers and also finds time, as a qualified oenologist, to make the wine for the Remoissenet négociant business.

After a tiny 2021 crop, we are delighted to offer more generous volumes of the 2022 vintage.



White	Bin no.	CASE SIZE	% abv	£ per bottle DP Inc VAT	£ per case IN BOND
<b>Rully Montagne La Folie blanc</b>	<b>CJ1</b>	6x75cl	13	27.00	119.00
<i>From a stony, south-east facing vineyard in the north of the appellation. Fermented and aged for 12 months in 15% new oak barrels, this is ripe and fruity with gentle oak, a crisp, vibrant texture and lovely freshness from the excellent acidity. Drink 2024-2027.</i>					
<b>Rully En Villerange blanc</b>	<b>CJ2</b>	6x75cl	13	30.00	134.00
<i>The richer soil with a higher proportion of clay gives a denser, fleshier wine with fine, honeyed fruit and a sumptuous finish. Drink 2024-2027.</i>					
Red					
<b>Bourgogne Côte d'Or Pinot Noir Milliane</b>	<b>CJ3</b>	6x75cl	13.5	25.00	109.00
<i>From a single hectare of vines in Pommard on the lower-lying land below the château. Shows much of the richness of a fine Pommard in a fresher, more accessible style with masses of vibrant, red and black fruits and just the right amount of oak. Drink 2025-2030.</i>					
<b>Rully La Chaume rouge</b>	<b>CJ4</b>	6x75cl	13	27.00	119.00
<i>A magnificent wine with vibrant, crunchy red cherry and raspberry fruit complemented by a touch of vanilla and spice from ageing in 15% new oak barrels. A great example of crisp, fresh pinot noir from a splendid 2.5 ha vineyard opposite the Château de Rully. Drink 2026-2030.</i>					
<b>Beaune 1er Cru Epenottes</b>	<b>CJ5</b>	6x75cl	13.5	58.00	274.00
<i>From a small 0.19 ha parcel of 80 year old vines, in this fine Beaune premier cru that lies on the border with Pommard. 30% of the bunches are left intact and the warm, sunny site gives a delicious, forward, sumptuous wine full of ripe fruit and sweet tannins. Drink 2026-2033.</i>					
<b>Pommard 1er Cru Charmots</b>	<b>CJ6</b>	6x75cl	13.5	63.00	299.00
<i>0.38 ha plot of vines planted in 1919. The old vines give a tiny yield (just 3 barrels in 2022) of rich, concentrated wine of great elegance and vivacity that will age magnificently. Drink 2027-2034.</i>					

# Domaine Franck Lamargue

Franck Lamargue has built this 12 hectare domaine from scratch over the past 20 years. Based in the village of La Rochepot, just over the hill from Saint Aubin, the vineyards are worked organically and the grapes harvested by hand.

A new winery was constructed last year which will enable Franck to continue to expand his increasingly successful estate.

In 2022, Franck harvested during the first week of September with the fruit in excellent condition and with high levels of both sugar and acidity giving a fine range of rich yet elegant wines.



White	Bin no.	CASE SIZE	% abv	£ per bottle DP Inc VAT	£ per case IN BOND
<b>Maranges Vignes Blanches</b>	<b>FL1</b>	6x75cl	13	27.00	119.00
<i>Vignes Blanches is a top site for white wine in the lesser-known village of Maranges at the southern end of the Côte de Beaune. The high altitude (360m) and thin, stony soil gives a crisp, refreshing wine that has fine fruit and minerality. Vinified 50% in barrel and 50% in stainless steel vats, this is a great success and one of the very best value whites of the Côte d'Or. Drink 2024-2026.</i>					
<b>Auxey-Duresses Les Hautés</b>	<b>FL2</b>	6x75cl	12.5	30.00	134.00
<i>From 65 year old vines planted on the border with Meursault. Fermented and aged for 9 months in 20% new French oak casks from Tonnellerie Montgillard. Rich and buttery in the Meursault style complemented by crisp acidity. Drink 2024-2027.</i>					
<b>Saint Romain La Combe Bazin</b>	<b>FL3</b>	6x75cl	12.5	31.00	139.00
<i>A fine vineyard just below the village of Saint Romain that faces south west. Ripe and sunny whilst retaining excellent bite and minerality. Aged for 9 months in barrels from the local François Frères tonnellerie. Drink 2024-2027.</i>					
Red					
<b>Monthélie Les Gamets</b>	<b>FL4</b>	6x75cl	13	25.00	109.00
<i>Monthélie is a fine alternative to neighbouring Volnay. Beautiful, red fruits on the nose and a delicious, succulent texture. Has real class and a long, lingering finish. Drink 2025-2029.</i>					
<b>Maranges 1er Cru Fussière</b>	<b>FL5</b>	6x75cl	13.5	28.00	124.00
<i>The top red wine site in Dezize-Lès-Maranges. 60+ year old vines give unusual depth and concentration. Lovely, complex mixture of red and black fruits, a rich, generous texture and impressive length on the finish. Drink 2026-2030.</i>					

# Domaine Capuano-Ferreri

A fine, 8 hectare estate with vines in both Chassagne and Santenay. Impeccably run by John Capuano who augments the domaine's own production by buying grapes on long term contracts from the owners of a further 12 hectares. The wines are vinified in the magnificent cellars in the centre of Santenay and, until recently, over two thirds of the production was sold in France. We are now selling an increasing amount for him in the UK. The 2022s are his best ever wines combining fresh, ripe fruit flavours with generous textures and excellent structure.



	Bin no.	CASE SIZE	% abv	£ per bottle DP Inc VAT	£ per case IN BOND
White					
<b>Bourgogne Chardonnay</b>	<b>CF1</b>	6x75cl	13	23.00	99.00
<i>From vines in Chassagne-Montrachet and neighbouring Chassey-le-Camp this is ripe and aromatic with gentle oak and a soft, attractive texture. Already delicious for drinking now. Drink 2024-2026.</i>					
<b>Santenay Vieilles Vignes blanc</b>	<b>CF2</b>	6x75cl	13.5	34.00	154.00
<i>From the higher section of La Comme, where the climate is cooler and the soil stonier. The higher proportion of chalk is perfectly suited to white wine production. Fermented and aged for 10 months in 30% new oak barrels, this is rich and intense with a gorgeous, succulent texture and long finish. Drink 2024-2027.</i>					
<b>Chassagne-Montrachet Cuvée Prestige</b>	<b>CF3</b>	6x75cl	13.5	61.00	289.00
<i>The domaine's finest white wine made from three parcels, all situated next to premiers crus, two adjacent to Morgeot and one next to Vergers overlooking the grand cru of Le Montrachet. Full and fat with luxurious fruit and a sweet, rich aftertaste. Drink 2025-2028.</i>					
Red					
<b>Bourgogne Pinot Noir</b>	<b>CF4</b>	6x75cl	13	23.00	99.00
<i>Bright red fruits and a delicious, crunchy texture from this attractive cuvée produced from the domaine's vineyards in Chassagne-Montrachet and Chassey-le-Champ. Drink 2024-2027.</i>					
<b>Santenay Vieilles Vignes rouge</b>	<b>CF5</b>	6x75cl	13.5	29.00	129.00
<i>Ageing for 12 months in small oak barrels gives notes of vanilla and spice to the red cherry fruit. Fresh and fruity with ripe tannins to add weight and structure. Drink 2024-2029.</i>					
<b>Santenay 1er Cru La Comme</b>	<b>CF6</b>	6x75cl	13.5	34.00	154.00
<i>A ripe open premier cru that combines rich fruit, fine structure and length. Already delicious and will age gracefully. Drink 2024-2030.</i>					



# Domaine Vincent & François Jouard

Brothers Vincent and François have now been joined by François's son, Pierre-Henri, and together they run one of the finest Chassagne estates. In 2022 it was important to harvest their 11 hectares swiftly and they picked the entire estate in seven days from 27th August to 2nd September. There was no need for chaptalisation with all the fruit being gathered at optimum ripeness (13.5%). The wines were fermented and aged for 12 months in Allier oak barrels from the local Tonnellerie Chassin. 20% new oak was used for the village wine and 25 to 30% for the premiers crus.

White

## Chassagne-Montrachet Vieilles Vignes

Bin no.	CASE SIZE	% abv	£ per bottle DP Inc VAT	£ per case IN BOND
JO1	6x75cl	13.5	63.00	299.00

The domaine owns 3 hectares in different sectors of the appellation. François retains the fruit from the oldest vines in the best-placed parcels and vinifies 25 barrels himself, selling the rest of the crop to the Beaune négociants. This is a glorious, aromatic, elegant wine with depth and persistence which is not far off premier cru quality. Drink 2025-2028.

## Chassagne-Montrachet 1er Cru La Maltroie

JO2	6x75cl	13.5	72.00	344.00
-----	--------	------	-------	--------

The deep, rich soil gives a fuller-bodied wine with a rich, fleshy texture and a persistent aftertaste. Drink 2025-2029.

## Chassagne-Montrachet 1er Cru Champs Gains

JO3	6x75cl	13.5	72.00	344.00
-----	--------	------	-------	--------

The most open and forward of the domaine's 1ers crus with ripe, peachy fruit, a touch of oak and a long, crisp finish. Drink 2025-2028.

## Chassagne-Montrachet 1er Cru Morgeot Fairendes

JO4	6x75cl	13.5	78.00	374.00
-----	--------	------	-------	--------

Fairendes is one of the finest parts of Morgeot, Chassagne's largest premier cru and gives a wine with both power and finesse. Lovely, honeyed fruit is balanced by crisp acidity. A fine, harmonious wine that drinks well at an early age and ages gracefully. Drink 2025-2029.

## Chassagne-Montrachet 1er Cru Chaumées Clos de la Truffière

JO5	6x75cl	13.5	79.00	379.00
-----	--------	------	-------	--------

The domaine's most complete premier cru. Facing the grand cru of Le Montrachet at the northern end of the appellation, the high altitude and stony soil gives a rich, intense wine with wonderful purity of fruit and a long, crisp, mineral finish. Drink 2026-2030.

## Bâtard-Montrachet

JO6	6x75cl	13.5	398.00	1974.00
-----	--------	------	--------	---------

The Jouards own 0.12 hectares of this fabulous grand cru. 75% of the vines were planted in 1951 with the rest in 1996. François made three 228 litre barrels in 2022, two of which were new. Rich and powerful with concentrated fruit, spicy oak and superb length. Drink 2026-2031.

# Domaine Jean-Marc Pillot

Jean-Marc's son, Antonin, is one of the finest of Chassagne's young wine-makers and is taking this well-known family estate to even greater heights. The newly extended winery enables the white and red wines to be vinified in separate cellars at different temperatures, resulting in fresher, more precise whites and richer, more generous reds.

The 2022 harvest ran from 25<sup>th</sup> August to 2<sup>nd</sup> September and is one of the domaine's finest ever. The village wines were harvested at a perfect 12.5%-13% potential alcohol and the premiers crus no more than 13.5%.



Antonin & Jean-Marc Pillot

White

Bin no.	CASE SIZE	% abv	£ per bottle DP Inc VAT	£ per case IN BOND
---------	-----------	-------	-------------------------	--------------------

<b>Bourgogne Chardonnay Le Haut des Champs</b>	<b>JP1</b>	6x75cl	13	27.00	119.00
--	------------	--------	----	-------	--------

*Antonin fashions this high-class Bourgogne Chardonnay from grapes in Chassagne, Puligny and the neighbouring village of Chassey-Le-Champ where his mother owns vineyards. 100% barrel-fermented and aged in cask for 12 months, this is rich and full-bodied whilst retaining excellent freshness and vitality. Drink 2025-2028.*

<b>Montagny Les Bassets</b>	<b>JP2</b>	6x75cl	13	29.00	129.00
-----------------------------	------------	--------	----	-------	--------

*A lovely, forward, ripe wine with a touch of honeyed fruit and a beautiful, generous texture. A real crowd pleaser that will drink well young but age gracefully. Drink 2025-2028.*

<b>Rully Gaudoirs</b>	<b>JP3</b>	6x75cl	13	34.00	154.00
-----------------------	------------	--------	----	-------	--------

*From one of the cooler sectors of Rully and has bright, fruity aromas complemented by a rich succulence on the palate. Drink 2025-2028.*

<b>Saint Romain La Périère</b>	<b>JP4</b>	6x75cl	13	34.00	154.00
--------------------------------	------------	--------	----	-------	--------

*Saint Romain lies just above Meursault and offers a great value alternative. Crisp and floral on the nose but rich and powerful on the palate. A delicious, complete wine. Drink 2025-2029.*

<b>Rully 1er Cru Les Raclots</b>	<b>JP5</b>	6x75cl	13	38.00	174.00
----------------------------------	------------	--------	----	-------	--------

*Full-bodied, honeyed wine from one of Rully's finest premiers crus. Aged in 20% new oak barrels for twelve months to add richness and complexity. Drink 2025-2029.*

White	Bin no.	CASE SIZE	% abv	£ per bottle DP Inc VAT	£ per case IN BOND
<b>Chassagne-Montrachet blanc</b>	<b>JP6</b>	6x75cl	13	64.00	304.00
<i>The domaine owns six parcels of vines with the largest lying near the border with Puligny just below Bâtard and Criots-Bâtard-Montrachet. The finest village Chassagne I tasted this year with richness and intensity allied to a mouthwatering minerality. Overall a lovely, complete, harmonious wine. Drink 2026-2030.</i>					
<b>Puligny-Montrachet Les Noyers Bret</b>	<b>JP7</b>	6x75cl	13	67.00	319.00
<i>A fine Puligny climat that lies to the south-west of the village in the direction of Chassagne. Crisp and aromatic, quite tight at present but has the structure and length to age magnificently. Drink 2026-2030.</i>					
<b>Chassagne-Montrachet 1er Cru Chenevottes</b>	<b>JP8</b>	6x75cl	13.5	86.00	414.00
<i>This fine premier cru was planted in the 1950s and the old vines give an intense, concentrated wine with impressive depth and tension. Has a wonderful close-knit texture and a long, lingering finish. Drink 2027-2032.</i>					
<b>Chassagne-Montrachet 1er Cru Les Caillerets</b>	<b>JP9</b>	6x75cl	13.5	99.00	479.00
<i>Splendidly situated premier cru that is widely considered to be the finest in the village. Combines richness and minerality, an impressive, complete wine. Drink 2027-2032.</i>					
<b>Chassagne-Montrachet 1er Cru Les Vergers Clos Saint Marc</b>	<b>JP10</b>	6x75cl	13.5	132.00	644.00
<i>From a small, walled, east-facing enclave within premier cru Vergers. Rich, concentrated and fresh with great finesse. Drink 2027-2032.</i>					
Red					
<b>Bourgogne Pinot Noir</b>	<b>JP11</b>	6x75cl	13	26.00	114.00
<i>From vines in Chassagne and the neighbouring villages of Santenay and Remigny together with a little from the Côte de Nuits. A beautiful, ripe, elegant wine with masses of red fruit and just enough tannin to add structure and ageing ability. Drink 2025-2029.</i>					
<b>Santenay Les Champs Claude rouge</b>	<b>JP12</b>	6x75cl	13	33.00	149.00
<i>A lovely rich, generous wine from vines that are immediately below those of Chassagne-Montrachet 1er Cru Morgeot. Has a similar, swaggering character with splendid mixture of red cherry and blackberry fruit and a long aftertaste. Drink 2026-2030.</i>					
<b>Chassagne-Montrachet Vieilles Vignes rouge</b>	<b>JP13</b>	6x75cl	13.5	39.00	179.00
<i>From five plots that range from the Puligny border in the north to Les Benois at the limit with Santenay in the south. Beautiful, red fruits on the nose and a lean, fresh texture on the palate. A fine, harmonious wine with excellent length on the finish. Drink 2026-2030.</i>					

# Domaine Vincent & Sophie Morey

Vincent took over this famous Chassagne estate from his father, Bernard, in the 1990s and has since added a splendid array of Santenay vineyards from his wife's family. The domaine now encompasses 20 hectares and includes a magnificent 4 hectare block of premier cru Embrazées.

The whites are fermented and aged for 12 months in 30% new oak barrels from tonnelleries Chassin, Seguin-Moreau and François Frères whilst the reds, 100% destemmed, are aged in French oak barrels from François Frères and Tonnellerie de Mercurey.

In 2022, Vincent picked promptly gathering all the fruit between 1st and 9th September, and has been rewarded by a brilliant range of crisp, fleshy whites and sumptuous, ripe reds.



Vincent Morey

White	Bin no.	CASE SIZE	% abv	£ per bottle DP Inc VAT	£ per case IN BOND
<b>Bourgogne Chardonnay</b>	<b>VM1</b>	6x75cl	13	30.00	134.00
<i>A delicious, open, stylish wine from vines in Chassagne-Montrachet which lie just outside the appellation. Vinified with the same care as the estate's more prestigious wines, this is ripe and fruity with just the right amount of oak. Drink 2025-2027.</i>					
<b>Santenay Les Hâtes blanc</b>	<b>VM2</b>	6x75cl	13	42.00	194.00
<i>Les Hâtes is a fine climat that lies sandwiched between the premiers crus of Passetemps and Beaurepaire. Fermented and aged in 30% new oak barrels, this has lovely, honeyed fruit, a touch of spicy oak and a rich, succulent texture. Drink 2025-2028.</i>					
<b>Santenay 1er Cru Beaurepaire</b>	<b>VM3</b>	6x75cl	13.5	48.00	224.00
<i>Splendid, south-facing hillside that gives a rich, full-bodied wine with dense, concentrated fruit and a lovely, fleshy texture. Drink 2025-2028.</i>					
<b>Santenay 1er Cru Passetemps</b>	<b>VM4</b>	6x75cl	13.5	48.00	224.00
<i>A fine, mineral wine which is the equal of many wines from the neighbouring village of Chassagne-Montrachet. Crisp and lean with vibrant fruit and a long aftertaste. Drink 2025-2028.</i>					
<b>Saint Aubin 1er Cru Charmois</b>	<b>VM5</b>	6x75cl	13.5	55.00	259.00
<i>A top quality premier cru that lies adjacent to the magnificent Chassagne-Montrachet 1er Cru Chaumées. Rich and aromatic with peachy fruit and toasty oak. Full-bodied with excellent length on the finish. Drink 2025-2028.</i>					
<b>Chassagne-Montrachet Vieilles Vignes</b>	<b>VM6</b>	6x75cl	13	64.00	304.00
<i>The domaine owns 5 parcels of 30-100 year old vines in Chassagne and makes one of the finest wines of the appellation. Intensely flavoured with fine structure and a rich, generous texture. Drink 2025-2029.</i>					



White	Bin no.	CASE SIZE	% abv	£ per bottle DP Inc VAT	£ per case IN BOND
<b>Chassagne-Montrachet 1er Cru Baudines</b>	<b>VM7</b>	6x75cl	13.5	75.00	359.00
<i>Lies high on the slope on the border with Santenay and makes a fine, crisp wine with ripe fruit balanced by excellent acidity. Drink 2025-2030.</i>					
<b>Chassagne-Montrachet 1er Cru Embrazées</b>	<b>VM8</b>	6x75cl	13.5	79.00	379.00
<i>The Moreys own a fabulous 4 hectares of this fine premier cru. More backward with a tight, close-knit texture and with the depth and concentration to age magnificently. Drink 2026-2031.</i>					
<b>Chassagne-Montrachet 1er Cru Morgeot</b>	<b>VM9</b>	6x75cl	13.5	79.00	379.00
<i>The largest premier cru in Chassagne that is well-known for its dense, fleshy wines that have class as well as richness. Full and juicy with a long aftertaste. Drink 2026-2031.</i>					
<b>Chassagne-Montrachet 1er Cru Caillerets</b>	<b>VM10</b>	6x75cl	13.5	93.00	449.00
<i>Situated mid-slope immediately to the south of the village, the stony soil has perfect exposure and drainage and gives a fine, stylish wine with wonderful purity of fruit and impressive minerality. Drink 2026-2031.</i>					
<b>Puligny-Montrachet 1er Cru Truffière</b>	<b>VM11</b>	6x75cl	13.5	100.00	484.00
<i>Fine premier cru that lies immediately above Folatières next to the hamlet of Blagny. The stony soil gives a crisp, elegant wine with excellent intensity and a long, persistent finish. Drink 2026-2031.</i>					
<b>Bâtard Montrachet</b>	<b>VM12</b>	6x75cl	13.5	398.00	1974.00
<i>Dense and concentrated. Rich, honeyed fruit is balanced by fine acidity. A lovely, complete, harmonious wine. Drink 2026-2031.</i>					
Red					
<b>Bourgogne Pinot Noir</b>	<b>VM13</b>	6x75cl	13	26.00	114.00
<i>A delightful, fresh, aromatic wine with vibrant red fruits, a touch of oak and a compact, harmonious texture. Drink 2025-2028.</i>					
<b>Santenay Les Hâtes rouge</b>	<b>VM14</b>	6x75cl	13	39.00	179.00
<i>A full bodied, juicy wine from this fine vineyard that gives consistently rich, gutsy wines. Lovely, red cherry and blackcurrant fruit with notes of spice and game. Drink 2026-2029.</i>					
<b>Chassagne-Montrachet Vieilles Vignes rouge</b>	<b>VM15</b>	6x75cl	13	39.00	179.00
<i>From 35 to 80 year old vines. Fresh raspberry and dark cherry fruit on the nose and fine richness on the palate. Finishes crisp and elegant with ripe tannins and excellent acidity. Drink 2026-2029.</i>					
<b>Santenay 1er Cru Gravières</b>	<b>VM16</b>	6x75cl	13.5	49.00	229.00
<i>The finest premier cru in Santenay. This has rich, intense fruit and a touch of vanilla and spice from ageing in 50% new oak barrels. Drink 2027-2030.</i>					

# Domaine Jean-Charles Fagot

Based in the village of Corpeau, just across the N74 from Puligny-Montrachet, Jean-Charles Fagot is not only a third generation vine-grower who studied at the Lycée Viticole in Beaune, but also the owner of the local Auberge du Vieux Vigneron, and a talented musician in a previous career. All the wines are fermented and aged in barrel in his cellar next to the church and his 2022s are a fine range of crisp, refined wines that perfectly reflect their origins.



White	Bin no.	CASE SIZE	% abv	£ per bottle DP Inc VAT	£ per case IN BOND
<b>Bourgogne Côte d'Or blanc Champs l'Huillier</b>	<b>FA1</b>	6x75cl	13	22.00	94.00
<i>A lovely cuvée made from a small parcel of old vines. Fermented and aged in oak barrels for 9 months, this is a fine, elegant wine with ripe, honeyed fruit, balancing oak and excellent acidity. Drink 2024-2026.</i>					
<b>Rully</b>	<b>FA2</b>	6x75cl	13	29.00	129.00
<i>A delicious, forward, open example of this splendid village that often makes the finest whites of the Côte Chalonnaise. Ripe and fruity with a soft, succulent texture. Drink 2024-2026.</i>					
<b>Saint Romain</b>	<b>FA3</b>	6x75cl	13	31.00	139.00
<i>A rich, ripe, honeyed wine from well-sited vines in this village just above Auxey-Duresses. Round and fleshy with delightful freshness on the finish. Drink 2024-2026.</i>					
<b>Saint Aubin 1er Cru</b>	<b>FA4</b>	6x75cl	13	47.00	219.00
<i>From two fine climats, Fionnes and Sur Gamay, that combine beautifully to produce this magnificent cuvée. Rich and powerful with intense fruit and crisp acidity. A fine, complete wine that has the balance to age gracefully. Drink 2025-2028.</i>					
<b>Chassagne-Montrachet</b>	<b>FA5</b>	6x75cl	13	62.00	294.00
<i>A brilliant example of Chassagne. Rich, intense fruit, a tight, close-knit texture and a long, lingering finish. Drink 2026-2030.</i>					
<b>Puligny-Montrachet</b>	<b>FA6</b>	6x75cl	13	64.00	304.00
<i>A rounder, more honeyed wine with riper fruit, a succulent texture and a fine, fresh finish. Drink 2025-2029.</i>					
<b>Puligny-Montrachet 1er Cru Hameau de Blagny</b>	<b>FA7</b>	6x75cl	13	86.00	414.00
<i>Jean-Charles made only one barrel of this rich, intense wine. Dense and concentrated with fine persistence. Drink 2026-2030.</i>					

# Domaine Gérard Thomas et Filles

Gérard has handed the day to day running of the domaine over to his two daughters, Anne and Isabelle. Their technical training has resulted in fresher, purer wines with more precise flavours. All the wines are now barrel-fermented and they have switched the supply of barrels from Gillet to Montgillard which has resulted in finer, less toasty, more elegant wines. Saint Aubin is now widely recognised as the best alternative to Puligny and Chassagne-Montrachet.



Gérard, Anne & Isabelle Thomas

White

	Bin no.	CASE SIZE	% abv	£ per bottle DP Inc VAT	£ per case IN BOND
<b>Saint Aubin Champ Tirant</b>	<b>GT1</b>	6x75cl	12.5	35.00	159.00
<i>A splendid climat that lies adjacent to premier cru Les Castets. Vinified in 25% new oak barrels, this is a forward, open, vividly fruity wine with a rich, generous texture. Drink 2024-2027.</i>					
<b>Saint Aubin 1er Cru Murgers des Dents de Chien</b>	<b>GT2</b>	6x75cl	12.5	40.00	184.00
<i>The domaine's finest premier cru, lying on the border with Puligny-Montrachet adjacent to the Puligny premier cru La Garenne. Crisp and intense with fine purity of fruit and an impressive, long aftertaste. Drink 2025-2028.</i>					
<b>Puligny-Montrachet Le Trézin</b>	<b>GT3</b>	6x75cl	12.5	60.00	284.00
<i>The highest climat in Puligny with a poor, stony soil that gives a crisp, elegant wine that ages gracefully. Drink 2025-2029.</i>					
<b>Puligny-Montrachet 1er Cru La Garenne</b>	<b>GT4</b>	6x75cl	12.5	77.00	369.00
<i>Situated high on the slope above premier cru Champ Gain. A lovely, taut, precise wine with fine, honeyed fruit balanced by crisp acidity. Drink 2025-2030.</i>					
<b>Chassagne-Montrachet 1er Cru Chenevottes</b>	<b>GT5</b>	6x75cl	12..5	77.00	369.00
<i>This fine premier cru lies just across the valley from Le Montrachet and faces due east which enables it to capture all the morning sun. Rich and intense but with fine bite and minerality. Drink 2025-2030.</i>					



Alexandra Pascal

## Domaine Joseph Pascal

The Pascal estate changed its name last year to that of the latest generation, Joseph Pascal, who is now working at the domaine with his parents, Yann and Alexandra.

The 15 hectares of vines makes this one of the larger properties in Puligny-Montrachet with all the crop now being vinified and bottled at the domaine. All their wines are barrel fermented with the casks being supplied by four local *tonnelleries*; Berthomieu, Montgillard, Meyrieux and Rousseau. Ageing is in cask on the fine lees for twelve months followed by 3-4 months in stainless steel vats. The 2022s are gloriously ripe yet fresh wines.

White	Bin no.	CASE SIZE	% abv	£ per bottle DP Inc VAT	£ per case IN BOND
<b>Bourgogne Côte d'Or Chardonnay</b>	<b>PA1</b>	6x75cl	12.5	25.00	109.00
<i>From vines located within Puligny-Montrachet and the neighbouring village of Corpeau. 80% of the juice is barrel-fermented with 20% vinified in stainless steel to retain the maximum of fruit. Fresh and aromatic with just a touch of oak, a rich, succulent texture and a long, generous aftertaste. Drink 2024-2026.</i>					
<b>Auxey-Duresses</b>	<b>PA2</b>	6x75cl	13.5	33.00	149.00
<i>The domaine owns three parcels (Vireux, Hautés and Lavières) above the village of Auxey-Duresses on the border with Meursault. 100% barrel-fermented with 15% new oak, this is a classy, harmonious wine of Meursault quality with ripe, honeyed fruit, fine balancing acidity and impressive length on the finish. Drink 2025-2027.</i>					
<b>Meursault</b>	<b>PA3</b>	6x75cl	13	56.00	264.00
<i>From three plots in the lieux-dits of Vireuils, Clos du Cromin and Les Corbins. 20% new oak gives a full-bodied, rich, toasty wine with concentrated fruit and excellent depth and ageing potential. Drink 2025-2028.</i>					
<b>Puligny-Montrachet</b>	<b>PA4</b>	6x75cl	13.5	63.00	299.00
<i>The Pascals have 3.5 hectares of Puligny-Montrachet, the largest parcel in Noyer Bret just a few hundred metres below the grands crus. A lovely, elegant wine which combines richness with vivacity. Drink 2025-2028.</i>					

White	Bin no.	CASE SIZE	% abv	£ per bottle DP Inc VAT	£ per case IN BOND
<b>Puligny-Montrachet 1er Cru Hameau de Blagny</b>	<b>PA5</b>	6x75cl	13.5	91.00	439.00

*Hameau de Blagny lies high on the border between Puligny and Meursault and gives a fine, lean, elegant wine with wonderful purity of fruit and a long, lingering finish. Drink 2025-2029.*

<b>Puligny-Montrachet 1er Cru Les Chalumeaux</b>	<b>PA6</b>	6x75cl	13.5	94.00	454.00
--	------------	--------	------	-------	--------

*With 0.85 hectare, the domaine is the largest landowner in this lesser-known but fine premier cru which lies immediately above Champs Canet and Clos de la Garenne. The poor, stony soil gives an intense, vibrant wine with crisp, lemony fruit and thrilling acidity. Drink 2025-2029.*

<b>Puligny-Montrachet 1er Cru Les Folatières</b>	<b>PA7</b>	6x75cl	13.5	96.00	464.00
--	------------	--------	------	-------	--------

*From lower on the slope at the same level as the grands crus of Le Montrachet and Chevalier-Montrachet. Fermented and aged in 25% new oak barrels, this is rich and sumptuous with a touch of honeyed fruit, a dense, close-knit texture and long aftertaste. Drink 2025-2030.*

Red

<b>Bourgogne Côte d'Or Pinot Noir</b>	<b>PA8</b>	6x75cl	12.5	21.00	89.00
---------------------------------------	------------	--------	------	-------	-------

*From the domaine's vines in Puligny-Montrachet and Volnay. Bursting with red fruits, this is fresh and lively, an elegant pinot noir that is already delicious but will age gracefully. Drink 2024-2027.*

<b>Puligny-Montrachet rouge</b>	<b>PA9</b>	6x75cl	13	40.00	184.00
---------------------------------	------------	--------	----	-------	--------

*The domaine is the only producer of red wine within the village appellation. From 50+ year old pinot noir vines in Noyer Bret, this has magnificent, red cherry fruit allied to just the right amount of oak. Fresh and aromatic, this is a rare gem. Drink 2025-2028.*





# Domaine Jean-Louis Chavy

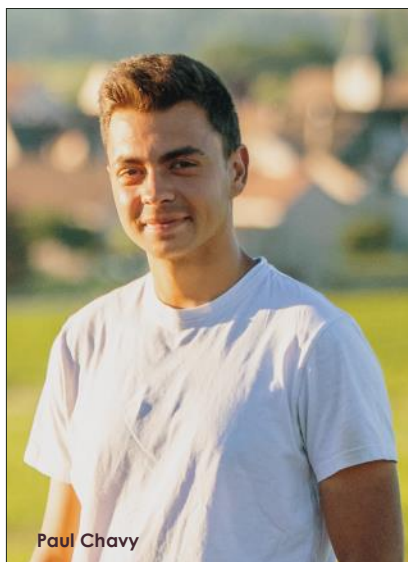
Jean-Louis vinifies an increasing proportion of his wines in larger 350 litre *demi-muids* from Meursault based *tonnellerie* Damy giving a lighter touch of oak and keeping the wines fresher and more elegant. His 23 year old son, Paul, has now joined the 7.3 hectare domaine and together they are making some of the most attractive, fruit-driven wines of Puligny.

The 2022 harvest lasted 7 days from 28th August to 3rd September with all the fruit picked by hand by a team of 30 harvesters.

White	Bin no.	CASE SIZE	% abv	£ per bottle DP Inc VAT	£ per case IN BOND
<b>Bourgogne Chardonnay</b>	<b>JLC1</b>	6x75cl	13	29.00	129.00
<i>A delicious forward, fruity wine from 2 hectares of 75 year old vines in Puligny-Montrachet together with a small parcel in Meursault. 90% of the fruit is vinified in 228 litre and 350 litre casks with just 10% kept in stainless steel to give additional freshness and vitality. Drink 2024-2027.</i>					
<b>Puligny-Montrachet</b>	<b>JLC2</b>	6x75cl	13.5	64.00	304.00
<i>The domaine owns 3 hectares of vines in 12 parcels planted with 30 to 65 year old vines. Most of the wine is fermented and aged for 12 months in 350 litre casks from the local <i>tonnellerie</i> Damy, 20% of which are new. Rich and generous with a soft, succulent texture and a long, fresh finish. A forward, elegant Puligny that will give huge pleasure relatively soon but will also age gracefully. Drink 2025-2028.</i>					
<b>Puligny-Montrachet Les Charmes</b>	<b>JLC3</b>	6x75cl	13.5	72.00	344.00
<i>A fatter, richer style of Puligny with a creamy texture and more obvious oak. Full and fleshy with a persistent aftertaste. Drink 2025-2029.</i>					
<b>Puligny-Montrachet 1er Cru Les Foliatières</b>	<b>JLC4</b>	6x75cl	14	99.00	479.00
<i>The most complete of the domaine's premiers crus. From a splendid 1.3 hectare parcel, this has ripe, opulent fruit balanced by crisp acidity and a long, mineral aftertaste. Drink 2026-2030.</i>					

# Paul Chavy

Paul purchases grapes from a number of fine growers in both the Côte de Beaune and Côte de Nuits, and vinifies them at the family domaine in Puligny-Montrachet. The whites are made in the same fashion as his father, Jean-Louis, has done for many years and are fine, open, fruity wines that drink well young but also age deceptively well. The reds are 100% destemmed and aged in a varying percentage of new oak barrels from tonnelleries François Frères and Rousseau.



Paul Chavy

White

## Saint-Romain La Perrière

Paul vinified 6 pièces of rich, spicy wine from this sunny, south-facing vineyard in Saint Romain. Aged in 20% new oak this has ripe, tropical fruit and a soft, succulent texture. Full-bodied with a strong persistent finish. Drink 2024-2026.

## Saint-Aubin 1er Cru Sur Gamay

From one of the finest premiers crus of Saint Aubin that lies just above the hamlet of Gamay. Rich and creamy with a generous texture and long aftertaste. Drink 2024-2027.

Red

## Gevrey-Chambertin

The grapes were perfectly ripe so Paul decided to extract as gently as possible with just a daily remontage and no pigeage at all. The fruit comes from two plots in Gevrey, Les Crais and Creux Brouillard, both known for their rich, fleshy wines. This has fabulous, dark, brooding fruit and a dense, generous texture. Aged in 25% new oak which adds a touch of spice. Drink 2027-2030.

## Nuits Saint Georges 1er Cru Damodes

This famous premier cru lies on the border with Vosne-Romanée and makes a wine that combines the structure of Nuits with the fruit and elegance of Vosne. Aged in 100% new oak casks, Paul's example is a full-bodied wine with masses of black cherry fruit, carefully extracted tannins and notes of pepper and vanilla from the new barrels. Finishes sweet and long. Drink 2028-2032.

Bin no.	CASE SIZE	% abv	£ per bottle DP Inc VAT	£ per case IN BOND
<b>PC1</b>	6x75cl	13.5	42.00	194.00
<b>PC2</b>	6x75cl	14	61.00	289.00
<b>PC3</b>	6x75cl	13	64.00	304.00
<b>PC4</b>	6x75cl	14	89.00	429.00

# Domaine Duc de Magenta

The 5th Duc, Maurice de MacMahon, has taken over the winemaking from his mother at the family domaine, L'Abbaye de Morgeot, in Chassagne-Montrachet.

The estate has historically rented out its vines and sold grapes to the leading Beaune *négociants*, but now they are vinifying and bottling the best wines under their own name.



White	Bin no.	CASE SIZE	% abv	£ per bottle DP Inc VAT	£ per case IN BOND
<b>Bourgogne blanc Les Houillères</b>	<b>DM1</b>	6x75cl	13.5	29.00	129.00
<i>Most of Les Houillères is within the Puligny-Montrachet appellation but the vines right next to the village are only classified as Bourgogne. The soil and wines are similar and this offers great value as a result. Fermented and aged in 228 litre oak barrels of both French and Czech origin, this is rich and generous with fine, honeyed fruit and crisp acidity. Drink 2024-2027.</i>					
<b>Puligny-Montrachet Les Houillères</b>	<b>DM2</b>	6x75cl	13.5	65.00	309.00
<i>From the vines within the part of Houillères classified as Puligny-Montrachet. Full-bodied with a succulent texture balanced by crisp, apple fruit on the finish. Drink 2025-2028.</i>					
<b>Puligny-Montrachet 1er Cru La Garenne</b>	<b>DM3</b>	6x75cl	14	96.00	464.00
<i>Just five barrels produced from the domaine's holding in La Garenne, the highest altitude premier cru in Puligny. Retains wonderful freshness even in hot summers such as 2022. Crisp and lean with fine minerality. Drink 2025-2029.</i>					



# Domaine Alain Chavy



Alain, Corinne and their son Corentin run this fine domaine. They are usually the first to start picking in Puligny and produce crisp, mineral wines that have wonderful purity of fruit and age magnificently. In 2022, the harvest started on 27th August and was completed within a week. Yields were satisfactory, averaging 55hl/ha, and the wines were fermented and aged for 12 months in barrels from *tonnelleries* Tremeaux, Billon and Damy followed by 6 months in stainless steel vats. An increasing number of larger 400 litre casks are being purchased as they give a less overtly oaky flavour to the wine and help retain greater freshness and vitality.

White	Bin no.	CASE SIZE	% abv	£ per bottle DP Inc VAT	£ per case IN BOND
-------	---------	-----------	-------	-------------------------	--------------------

<b>Bourgogne Chardonnay</b>	<b>AC1</b>	6x75cl	13	21.00	89.00
-----------------------------	------------	--------	----	-------	-------

The domaine owns 2.5 hectares of vines just outside the Puligny appellation which produce this crisp, elegant, gently oaked chardonnay. 60% of the wine is aged for nine months in oak barrels with 40% kept in stainless steel tanks to preserve the maximum of fruit. Fresh and lean with ripe fruit and fine balancing acidity. Drink 2024-2027.

<b>Puligny-Montrachet</b>	<b>AC2</b>	6x75cl	13	63.00	299.00
---------------------------	------------	--------	----	-------	--------

From several plots totalling 2.5 ha. Two thirds of the crop is aged in traditional 228 litre barrels and the rest in larger 400 litre casks. Full-bodied with ripe, honeyed fruit and a long finish. Drink 2024-2028.

<b>Puligny-Montrachet Les Charmes</b>	<b>AC3</b>	6x75cl	13	67.00	319.00
---------------------------------------	------------	--------	----	-------	--------

The domaine has two parcels in Les Charmes, a fine climat on the Meursault border adjacent to Meursault 1er Cru Charmes. The lighter soil gives a fine, stylish wine, restrained at present but with the depth and intensity to age magnificently. Drink 2025-2029.

<b>Puligny-Montrachet 1er Cru Champs Gains</b>	<b>AC4</b>	6x75cl	13	84.00	404.00
--	------------	--------	----	-------	--------

Champs Gains lies higher on the slope and the stony soil gives a fresh, distinguished wine that drinks well at an early age. Lovely, open fruit and a soft, succulent finish. Drink 2025-2029.

<b>Puligny-Montrachet 1er Cru Clavoillons</b>	<b>AC5</b>	6x75cl	13	87.00	419.00
---	------------	--------	----	-------	--------

Full-bodied, intensely flavoured wine that has a dense, close-knit texture and perfect balance. Rich and generous whilst retaining fine minerality. Drink 2026-2030.

<b>Puligny-Montrachet 1er Cru Les Folatières</b>	<b>AC6</b>	6x75cl	13	89.00	429.00
--	------------	--------	----	-------	--------

The domaine owns a magnificent 1.5 hectares of this splendid premier cru that lies just along the slope from the grand cru of Le Montrachet. Rich, opulent fruit with a touch of honey and spicy oak. Builds in the mouth to an explosive finish. Drink 2026-2031.

# Domaine Jacques Carillon

Jacques makes some of the very finest and most age worthy wines of Puligny. All the wines are barrel-fermented and then aged for 12 months in 228 litre French oak barrels from Tonnellerie de Mercurey, Seguin-Moreau and Boutes, followed by 6 months in stainless steel vats.

The 2022 harvest ran from 26th to 31st August and has given a splendid range of restrained, focused wines with a fine balance of fruit and acidity that will develop magnificently.



Jacques Carillon

White	Bin no.	CASE SIZE	% abv	£ per bottle DP Inc VAT	£ per case IN BOND
<b>Chassagne-Montrachet</b>	<b>JC1</b>	6x75cl	13.5	POA	POA
<i>From a single, 0.26 hectare plot that lies just above the Château de Chassagne. More forward than the domaine's Pulignys with ripe, honeyed fruit, a touch of oak and a soft, succulent texture balanced by a crisp finish. Drink 2026-2029.</i>					
<b>Puligny-Montrachet</b>	<b>JC2</b>	6x75cl	13.5	POA	POA
<i>Jacques owns vines in seven lieux-dits in Puligny totalling 2.7 hectares from which he fashions one of the very finest village wines of the Côte de Beaune. Fermented and aged in 15% new oak, this has remarkable intensity of flavour. Tight and restrained at present with a close knit texture this demands a few years to develop in bottle but will be magnificent. Drink 2027-2031.</i>					
<b>Puligny-Montrachet 1er Cru Les Champs Canet</b>	<b>JC3</b>	6x75cl	13.5	POA	POA
<i>The most elegant of the domaine's premiers crus with attractive, peachy fruit, a hint of oak and fine minerality. Drink 2028-2032.</i>					
<b>Puligny-Montrachet 1er Cru Les Perrières</b>	<b>JC4</b>	6x75cl	13.5	POA	POA
<i>From a splendid 0.61 hectare parcel in this magnificent premier cru where the 40 year old vines give a splendid, concentrated wine that is closed at present but has great ageing potential. Drink 2029-2033.</i>					
<b>Puligny-Montrachet 1er Cru Les Referts</b>	<b>JC5</b>	6x75cl	13.5	POA	POA
<i>Jacques owns 0.24 ha of Referts which lies just along the slope from Perrières on the border with Meursault. Combines the power of Perrières with the elegance of Champs Canet. Drink 2028-2033.</i>					
<b>Bienvenues-Bâtard-Montrachet</b>	<b>JC6</b>	6x75cl	13.5	POA	POA
<i>Only two barrels made from 0.12 hectares of this magnificent grand cru. The 58 year old vines give a rich, intense, complete wine that has ripe, honeyed fruit, immense structure and a compelling, long finish. Drink 2029-2034.</i>					

# Domaine Bzikot Père et Fils

Sylvain & Béatrice Bzikot own an impressive estate of 15 hectares centred on Puligny-Montrachet. Sylvain's grandfather arrived in Burgundy from Poland just before the Second World War and steadily built up the domaine in the post-war years when land was plentiful and cheap.

Their delicious Bourgogne Côte d'Or Chardonnay is made from the best placed parcels within the commune of Puligny but which lie just too low on the slope to qualify for the appellation.



White	Bin no.	CASE SIZE	% abv	£ per bottle DP Inc VAT	£ per case IN BOND
<b>Bourgogne Côte d'Or Chardonnay</b>	<b>BZ1</b>	6x75cl	13	25.00	109.00
<i>From the best placed vines of the domaine just outside the Puligny-Montrachet appellation. Sylvain vinifies half the crop in stainless steel vats to preserve freshness and half in small oak barrels, of which 10% are new. This is a splendid cuvée with fine vitality and precision and will be delicious to drink at an early age. Drink 2024-2028.</i>					
<b>Saint Aubin</b>	<b>BZ2</b>	6x75cl	13.5	38.00	174.00
<i>Sylvain makes this fine, aromatic Saint Aubin from three parcels of vines. Fermented entirely in 228 litre oak pièces, this is rich and opulent with honeyed fruit and a ripe, succulent texture. Drink 2024-2028.</i>					
<b>Meursault</b>	<b>BZ3</b>	6x75cl	13.5	55.00	259.00
<i>A typical, generous Meursault with excellent structure, concentrated fruit and a dash of toasty oak. Drink 2025-2029.</i>					
<b>Puligny-Montrachet</b>	<b>BZ4</b>	6x75cl	13.5	59.00	279.00
<i>Two thirds of the juice is fermented in oak barrels and one third in stainless steel vats. A beautiful, harmonious Puligny with ripe, peachy fruit allied to crisp acidity. A high-class, characterful wine that will be enjoyable young and age gracefully. Drink 2025-2030.</i>					
<b>Puligny-Montrachet La Roussele</b>	<b>BZ5</b>	6x75cl	13.5	67.00	319.00
<i>A splendid climat just below premiers crus Perrières and Referts, not far from the Meursault border. Rich and powerful with great depth and concentration. Premier cru quality. Aged in 25% new oak barrels, principally demi-muids. Drink 2025-2031.</i>					
<b>Puligny-Montrachet 1er Cru Les Folatières</b>	<b>BZ6</b>	6x75cl	13.5	89.00	429.00
<i>Sylvain owns 0.4ha of this magnificent premier cru which has beautiful, honeyed fruit balanced by excellent acidity. Finishes rich and long. Drink 2026-2031.</i>					

# Domaine Vincent Latour

Vincent & Cécile Latour, now aided by their son Thomas, have built a magnificent new cellar, excavating and extending their existing premises in the centre of Meursault. After a tiny 2021 crop, the new cellar is now satisfyingly full with generous crops in both 2022 and 2023.

The wines are vinified in an intriguing mix of traditional 228 litre oak *pièces*, larger *demi-muids* and a number of larger oak *foudres* ranging in size from 1000 to 2500 litres.



White

Bin no.	CASE SIZE	% abv	£ per bottle DP Inc VAT	£ per case IN BOND
---------	-----------	-------	-------------------------	--------------------

## **Bourgogne Côte d'Or Chardonnay**

<b>VL1</b>	6x75cl	12.5	26.00	114.00
------------	--------	------	-------	--------

*The domaine owns land that lies between the village and the route nationale that is just outside the Meursault appellation and therefore only classified as Bourgogne Côte d'Or. Fermented and aged in both foudres and demi-muids, this is rich and aromatic with fine, peachy fruit and a fresh but long finish. Drink 2025-2027.*

## **Saint Aubin 'Cuvée Thomas'**

<b>VL2</b>	6x75cl	13	35.00	159.00
------------	--------	----	-------	--------

*A splendid cuvée named after Vincent's elder son Thomas, who is now working at the domaine. A lovely, fresh, aromatic wine with ripe fruit and thrilling minerality. Drink 2025-2028.*

## **Saint Aubin 1er Cru Fionnes**

<b>VL3</b>	6x75cl	13.5	47.00	219.00
------------	--------	------	-------	--------

*Richer and more opulent than the village Saint Aubin, this has gorgeous, honeyed fruit and a generous texture. Drink 2025-2028.*

## **Meursault Cuvée Saint Jean**

<b>VL4</b>	6x75cl	13	56.00	264.00
------------	--------	----	-------	--------

*Vincent makes this cuvée from three fine lieux-dits; Vireuils, Crotots and Meix Chavaux. Vinified in both large oak foudres and smaller barrels, this is quintessential Meursault - full and racy with fresh, ripe fruit and a firm but rich structure. Drink 2025-2029.*

## **Meursault Pellans**

<b>VL5</b>	6x75cl	13	59.00	279.00
------------	--------	----	-------	--------

*From a small (0.18ha) plot of vines on the border with Puligny. Vinified in 228 litre oak barrels, 20% of which are new, this is ripe and generous with fine purity of fruit. Drink 2025-2029.*

White	Bin no.	CASE SIZE	% abv	£ per bottle DP Inc VAT	£ per case IN BOND
<b>Chassagne-Montrachet Benoitès</b>	<b>VL6</b>	6x75cl	13	60.00	284.00
<i>A crisp, intense Chassagne from a fine climat in the south of the appellation, adjacent to premier cru Morgeot. Has a close-knit texture and a long, lingering finish. Drink 2026-2030.</i>					
<b>Meursault Narvaux</b>	<b>VL7</b>	6x75cl	13	65.00	309.00
<i>From high on the slope above premier cru Perrières. Fermented and aged for 12 months in small 228 litre pièces this is rich and intense with excellent structure. Currently tight and backward, this has fine poise and ageing potential. Drink 2026-2030.</i>					
<b>Meursault Les Grands Charrons</b>	<b>VL8</b>	6x75cl	13	65.00	309.00
<i>Aged in larger oak foudres and demi-muids this has a warmer, more open style with fine, opulent fruit and a creamy texture. A lovely, harmonious wine. Drink 2026-2030.</i>					
<b>Chassagne-Montrachet 1er Cru Morgeot</b>	<b>VL9</b>	6x75cl	13.5	117.00	569.00
<i>Has all the traditional richness of Morgeot allied to fine bite and minerality. Already delicious, this has the balance and structure to age magnificently. Drink 2026-2030.</i>					
<b>Meursault 1er Cru Poruzot</b>	<b>VL10</b>	6x75cl	13.5	117.00	569.00
<i>Fermented and aged in 450 litre demi-muids, this is rich and generous with fine, honeyed fruit balanced by excellent acidity on the finish. Drink 2026-2030.</i>					
<b>Meursault 1er Cru Charmes</b>	<b>VL11</b>	6x75cl	13.5	147.00	719.00
<i>A fat, rich style of Meursault. Aged in a single 900 litre foudre and four 228 litre pièces. Ripe and honeyed with excellent freshness on the finish. Drink 2026-2030.</i>					
<b>Meursault 1er Cru Goutte d'Or</b>	<b>VL12</b>	6x75cl	13.5	162.00	794.00
<i>The domaine owns just 0.1 ha of this fine premier cru from which Vincent fashions a single 450 litre demi-muid. Rich and oaky with opulent fruit and an impressive, close-knit texture. Drink 2026-2030.</i>					
<b>Meursault 1er Cru Perrières</b>	<b>VL13</b>	6x75cl	13.5	162.00	794.00
<i>The tightest, most backward wine in the cellar. Fermented and aged in six 228 litre pièces, three of which were new. Lean and mineral with great concentration of flavour and a long aftertaste. Drink 2027-2031.</i>					



Charles & Philippe Bouzereau

# Domaine Philippe Bouzereau

Philippe and his younger brother, Charles, have taken over the running of this splendid, 20 hectare, family domaine from their father, also Philippe. The modern cellars lie in the centre of the village of Meursault, adjacent to the Château de Citeaux which Philippe père bought in the 1990s.

The 2022s were harvested early, from 28th August, and are a splendid range of rich, harmonious wines that combine ripe fruit with excellent vitality.

White	Bin no.	CASE SIZE	% abv	£ per bottle DP Inc VAT	£ per case IN BOND
<b>Bourgogne Côte d'Or Chardonnay</b>	<b>PB1</b>	6x75cl	13.5	30.00	134.00
<i>Splendid, rich, full-bodied wine from 1.7 hectares of vines within the commune of Meursault and all lying to the south of the village in the direction of Puligny-Montrachet. Fermented and aged in 228 litre and 300 litre barrels together with larger (1200 &amp; 2000 litre) oak foudres. Meursault quality at a fraction of the price. Drink 2024-2027.</i>					
<b>Meursault</b>	<b>PB2</b>	6x75cl	13.5	58.00	274.00
<i>A delicious, forward, open Meursault. Ripe and aromatic with rich, peachy fruit and fine, balancing acidity. Fermented and aged for 12 months in 228 litre and 300 litre barrels. Drink 2025-2028.</i>					
<b>Meursault Les Grands Charrons</b>	<b>PB3</b>	6x75cl	13.5	59.00	279.00
<i>Fine climat to the west of the village that gives a rich, full-bodied, generous Meursault with honeyed fruit and a close-knit texture. Drink 2025-2029.</i>					
<b>Meursault Clos de la Croix Noire</b>	<b>PB4</b>	6x75cl	13	59.00	279.00
<i>A beautifully sited climat in the direction of Monthélie. Vinified in 300 litre barrels and larger oak foudres. Rich and aromatic with a touch of toasty oak, excellent acidity and a long, mineral finish. Drink 2025-2029.</i>					
<b>Meursault 1er Cru Poruzots</b>	<b>PB5</b>	6x75cl	13	99.00	479.00
<i>Produced from some of the oldest vines of the domaine, the majority over 100 years old. Full and intense, rich and generous with a persistent aftertaste. Drink 2025-2030.</i>					
<b>Meursault 1er Cru Perrières</b>	<b>PB6</b>	6x75cl	13.5	110.00	534.00
<i>The most backward and most age worthy wine in the cellar. Tight and restrained at present but with impressive depth and concentration. Drink 2026-2031.</i>					

# Domaine Michel Bouzereau et Fils

Jean-Baptiste Bouzereau, a second cousin of Charles and Philippe, picked early starting on 25th August with the vines in Limozin and finishing in Blagny on 2nd September. All the fruit was picked with excellent levels of both sugar (12.8-13.1% potential alcohol) and acidity and has given a magnificent range of rich yet elegant wines that Jean-Baptiste considers to be 'similar to 2020 but perhaps with more personality'.

I love the ripe, fleshy textures allied to crisp minerality which places the domaine firmly in the top echelon of Meursault estates.



Jean-Baptiste Bouzereau

White	Bin no.	CASE SIZE	% abv	£ per bottle DP Inc VAT	£ per case IN BOND
<b>Bourgogne Côte d'Or Chardonnay</b>	<b>MB1</b>	6x75cl	13	30.00	134.00
<i>Jean-Baptiste makes this delicious, elegant wine from 3 hectares of vines in both Meursault (60%) and Puligny-Montrachet (40%). Vinified 50% in 228 litre pièces and 50% in 500 litre demi-muids. A beautiful, fresh, creamy wine with precise fruit and crisp minerality. Drink 2025-2028.</i>					
<b>Meursault Les Grands Charrons</b>	<b>MB2</b>	6x75cl	13	64.00	304.00
<i>From one of the finest lieux-dits immediately to the west of the village. Full-bodied, generous wine with fine, honeyed fruit and excellent structure. Drink 2025-2029.</i>					
<b>Meursault Limozin</b>	<b>MB3</b>	6x75cl	13	79.00	379.00
<i>Limozin lies just below premier cru Genevrières and makes a similarly distinguished wine. Rich and harmonious with a succulent texture. Already delicious but will age gracefully. Drink 2025-2029.</i>					
<b>Meursault 1er Cru Blagny</b>	<b>MB4</b>	6x75cl	13	99.00	479.00
<i>Planted in 1988 these vines in the Ravelles section of Blagny are now in their prime and giving a magnificent, complex wine with ripe fruit and thrilling acidity. Drink 2026-2030.</i>					
<b>Meursault 1er Cru Genevrières</b>	<b>MB5</b>	6x75cl	13	125.00	609.00
<i>From two parcels planted in 1985 and 1989 by Jean-Baptiste's father Michel. Impressive, close-knit texture, restrained but with fine ageing potential. Drink 2026-2031.</i>					
<b>Puligny-Montrachet 1er Cru Les Champs Gains</b>	<b>MB6</b>	6x75cl	13	125.00	609.00
<i>The sheltered position adjacent to premier cru Truffière makes this climat one of the first to be harvested. Beautiful, pure fruit with a soft, succulent texture and a long, creamy finish. Drink 2026-2031.</i>					

# Domaine Jean-Jacques Girard

Jean-Jacques and Agnès Girard, together with their sons Vincent and François, own a splendid domaine that covers most of the appellations of the northern Côte de Beaune. The whites are barrel fermented with an increasing proportion of larger *demi-muids* whilst the reds are 100% destemmed and aged for 12 months in traditional 228 litre Burgundian *pièces*. Careful extraction of fruit and tannin gives rich, harmonious wines that are delicious to enjoy young but which have the potential to age gracefully.



Vincent & Jean-Jacques Girard

White

Bin no.	CASE SIZE	% abv	£ per bottle DP Inc VAT	£ per case IN BOND
---------	-----------	-------	-------------------------	--------------------

## **Bourgogne Chardonnay Combe d'Orange**

<b>GR1</b>	6x75cl	12.5	20.00	84.00
------------	--------	------	-------	-------

*A cool site above the premiers crus of Savigny that Jean-Jacques planted with chardonnay in the 1990s. Crisp and fresh with lovely, mouthwatering fruit and a generous finish. Drink 2024-2026.*

## **Savigny Lès Beaune blanc**

<b>GR2</b>	6x75cl	13	29.00	129.00
------------	--------	----	-------	--------

*Principally from Les Godeaux, an excellent climat that is sandwiched between the premiers crus of Guettes and Vergelesses. The stony soil is perfect for white wine production and the 30+ year old vines give a wine with remarkable depth and precision. Drink 2025-2028.*

## **Meursault**

<b>GR3</b>	6x75cl	13	56.00	264.00
------------	--------	----	-------	--------

*Ripe and generous with fine purity of fruit, a touch of toasty oak and a satisfying aftertaste. Drink 2025-2029.*

## **Chassagne-Montrachet**

<b>GR4</b>	6x75cl	13	60.00	284.00
------------	--------	----	-------	--------

*Crisp and lemony with an excellent vitality and a lovely, mineral finish. Drink 2025-2029.*

## **Corton-Charlemagne**

<b>GR5</b>	6x75cl	13	209.00	1029.00
------------	--------	----	--------	---------

*A fabulous, intense, rich wine from a south-facing plot in the Aloxe section of this magnificent grand cru. Full-bodied and creamy with excellent balancing acidity. Drink 2026-2030.*



Red	Bin no.	CASE SIZE	% abv	£ per bottle DP Inc VAT	£ per case IN BOND
<b>Savigny Lès Beaune rouge</b>	<b>GR6</b>	6x75cl	13.5	25.00	109.00
<i>The domaine owns two main parcels in Pimentiers and Champs Chardons which are vinified together to make this splendid cuvée brimming with red cherry and brambly fruit. A forward, open wine that has sufficient depth to age gracefully. Drink 2026-2030.</i>					
<b>Savigny Lès Beaune 1er Cru Fourneaux</b>	<b>GR7</b>	6x75cl	13.5	30.00	134.00
<i>Fine premier cru that lies on the border with Aloxe-Corton. There is more clay in the soil which gives a fuller-bodied, richer wine with excellent depth and vitality. Drink 2026-2031.</i>					
<b>Pernand-Vergelesses 1er Cru Fichots</b>	<b>GR8</b>	6x75cl	13.5	34.00	154.00
<i>Splendid premier cru that lies just a few metres from Corton-Charlemagne but has a deep clay soil that is perfect for making rich, generous red wines. A lovely, complete wine full of dark cherry fruit and fresh acidity. Drink 2026-2032.</i>					
<b>Savigny Lès Beaune 1er Cru Peuillets</b>	<b>GR9</b>	6x75cl	13.5	34.00	154.00
<i>From the southern side of Savigny adjacent to Beaune 1er Cru Clos du Roi. A splendid, generous wine with red and black cherry fruit and silky tannins. Drink 2026-2032.</i>					
<b>Savigny Lès Beaune 1er Cru Lavières</b>	<b>GR10</b>	6x75cl	13.5	38.00	174.00
<i>The most age worthy of the domaine's premiers crus. Full and rich with firm but ripe tannins, excellent structure and an impressive, long finish. Drink 2027-2033.</i>					
<b>Beaune 1er Cru Clos du Roi</b>	<b>GR11</b>	6x75cl	13.5	38.00	174.00
<i>A fine, early-ripening site that is often the first of the domaine's vineyards to be harvested. Rich and aromatic with masses of warm fruit, a succulent texture and sweet finish. Drink 2026-2033.</i>					
<b>Volnay Vieilles Vignes</b>	<b>GR12</b>	6x75cl	13.5	38.00	174.00
<i>From a vineyard planted in 1959 that lies just above the village of Volnay. The old vines give depth and intensity, the high altitude contributes freshness and vitality. A fine, complete wine; quintessential Volnay. Drink 2026-2033.</i>					
<b>Pommard Vieilles Vignes</b>	<b>GR13</b>	6x75cl	13.5	44.00	204.00
<i>Dark coloured, full-bodied wine with typical Pommard depth and structure. The most backward wine in the cellar and one that demands patience. Drink 2027-2034.</i>					
<b>Corton Clos du Roi</b>	<b>GR14</b>	6x75cl	13.5	99.00	479.00
<i>From high on the hill of Corton, this is fresh and aromatic with wonderful vivid fruit, firm but ripe tannins and a long, sweet finish. Drink 2027-2034.</i>					

# Domaine de La Pousse d'Or

Benoît Landanger has taken over the running of this fine, biodynamic estate from his father, Patrick, who sadly died earlier this year. The amount of new oak has been reduced to 20% from 30% and the wines are now spending a second winter in stainless steel vats. The resulting wines are fresher and purer whilst retaining their traditional sumptuous character. The 2022 harvest ran from 1st to 9th September incorporating all the domaine's vineyards that cover the entire Côte d'Or from Santenay in the south to Gevrey-Chambertin in the north.



	Bin no.	CASE SIZE	% abv	£ per bottle DP Inc VAT	£ per case IN BOND
White					
<b>Puligny-Montrachet 1er Cru Cailleret</b>	<b>PD1</b>	6x75cl	13	POA	POA
<i>Patrick Landanger bought a splendid 0.71 ha parcel of Cailleret from Domaine Jean Chartron in 2004. Fermented in 350 litre French oak casks, this is wonderfully aromatic with fine, pure fruit and superb minerality. Drink 2025-2030.</i>					
Red					
<b>Santenay 1er Cru Clos de Tavannes</b>	<b>PD2</b>	6x75cl	13	POA	POA
<i>A delicious, elegant wine full of red fruits. Sweet and generous, a lovely example of this great value appellation. Drink 2026-2030.</i>					
<b>Chambolle-Musigny</b>	<b>PD3</b>	6x75cl	13	POA	POA
<i>A beautiful, harmonious wine of great finesse. Elegant and stylish with lovely red cherry and blackcurrant fruit. Drink 2027-2032.</i>					
<b>Volnay 1er Cru En Caillerets</b>	<b>PD4</b>	6x75cl	13	POA	POA
<i>The best-known premier cru of Volnay, this is typically soft and elegant. Ageing in 20% new oak adds structure and spice. Sweet, generous finish. Drink 2026-2031.</i>					
<b>Volnay 1er Cru En Caillerets Cuvée Amphore</b>	<b>PD5</b>	6x75cl	13	POA	POA
<i>The same wine, but aged in a single 800 litre terracotta amphora. Pure, red fruits, vivid and succulent. Drink 2026-2031.</i>					
<b>Pommard 1er Cru Les Jarollières</b>	<b>PD6</b>	6x75cl	13	POA	POA
<i>The domaine owns 1.5 ha of this splendid premier cru. Deep and generous with fine, spicy oak and a touch of vanilla. Drink 2026-2032.</i>					
<b>Volnay 1er Cru Clos d'Audignac</b>	<b>PD7</b>	6x75cl	13	POA	POA
<i>Full-bodied, gutsy Volnay from this monopole of the domaine that lies immediately in front of the cellars. Backward at present with dark, brambly fruit and firm tannins, this requires patience but will age magnificently. Drink 2027-2033.</i>					

Red	Bin no.	CASE SIZE	% abv	£ per bottle DP Inc VAT	£ per case IN BOND
<b>Volnay 1er Cru Clos de la Bousse d'Or</b>	<b>PD8</b>	6x75cl	13	POA	POA
<i>The vineyard that gives its name to the estate. Lovely, fleshy, fruity wine full of cherry and blackberry notes, firm but ripe tannins and a long aftertaste. Drink 2026-2032.</i>					
<b>Volnay 1er Cru Clos des 60 Ouvrées</b>	<b>PD9</b>	6x75cl	13	POA	POA
<i>This enclave in Caillerets has long been vinified separately by the domaine as it gives a rich, concentrated wine with a magnificent close-knit texture and splendid length on the finish. Drink 2027-2033.</i>					
<b>Volnay 1er Cru Clos des 60 Ouvrées Amphore</b>	<b>PD10</b>	6x75cl	13	POA	POA
<i>Has the same richness as the barrel-aged version but with beautiful pure fruit and impeccable freshness and vitality. Drink 2027-2033.</i>					
<b>Corton Bressandes</b>	<b>PD11</b>	6x75cl	13	POA	POA
<i>From a 0.5 hectare plot, this is more forward than the Clos du Roi with an open texture and lovely, silky tannins. Finishes sweet and long. Drink 2026-2033.</i>					
<b>Corton Clos du Roi</b>	<b>PD12</b>	6x75cl	13	POA	POA
<i>Great value grand cru. Fresh and mineral due to its position high on the hill of Corton where the domaine owns 1.5 ha of vines. Intense red fruits and a lovely, lean texture. Drink 2027-2034.</i>					
<b>Chambolle-Musigny 1er Cru Groseilles</b>	<b>PD13</b>	6x75cl	13	POA	POA
<i>Sweet and succulent, this is quintessential Chambolle with rich, cherry and plum fruit and silky tannins. Drink 2027-2034.</i>					
<b>Chambolle-Musigny 1er Cru Amoureuses</b>	<b>PD14</b>	6x75cl	13	POA	POA
<i>A wonderful, harmonious wine full of red and black fruits, the finest of tannins and lovely, fresh acidity. Drink 2028-2036.</i>					
<b>Charmes-Chambertin</b>	<b>PD15</b>	6x75cl	13	POA	POA
<i>The second vintage made by the domaine since their purchase of 0.26 hectares of old vines (planted in 1957 &amp; 1987) in the Mazoyères section of Charmes Chambertin. Rich and generous, this has vibrant fruit and a fine, fleshy texture. Finishes sweet and long. Drink 2028-2036.</i>					
<b>Echezeaux</b>	<b>PD16</b>	6x75cl	13	POA	POA
<i>Another recent acquisition, 0.11 hectares of vines planted in 1951 which lie next to those of Domaine de la Romanée Conti. A big, flamboyant wine with opulent fruit and a creamy texture. A lovely crowd-pleaser that will be enjoyable relatively young and age magnificently. Drink 2027-2036.</i>					
<b>Clos de La Roche</b>	<b>PD17</b>	6x75cl	13	POA	POA
<i>This famous grand cru lies at the northern end of Morey Saint Denis on the border with Gevrey-Chambertin. Patrick Landanger bought the vines from the Remy family in 2009 and this is often the finest wine in the cellar. Dense and backward with concentrated, dark fruits and a sumptuous texture. A wonderful, complete wine. Drink 2028-2037.</i>					

# Maison Bertrand Ambroise

The day to day running of the estate is now in the hands of François Ambroise and his sister Ludivine. The reputation built by their father Bertrand over four decades for rich, opulent, full-bodied wines remains but François has injected more elegance and recent vintages have greater freshness and finesse. François picks a little earlier than in the past with the 2022 harvest running from 25th August (starting with the whites) to 12th September with most of the Nuits Saint Georges vineyards picked on the 4<sup>th</sup>, 5<sup>th</sup> and 6<sup>th</sup> September. The red bunches are 100% destemmed and François continues to use a high proportion of new oak when ageing the top red wines.



## White

Bin no.	CASE SIZE	% abv	£ per bottle DP Inc VAT	£ per case IN BOND
---------	-----------	-------	----------------------------	-----------------------

<b>Coteaux Bourguignons Lettre d'Eloïse Chardonnay</b>	<b>BA1</b>	6x75cl	13	20.00	84.00
--	------------	--------	----	-------	-------

*A lovely, fresh yet generous wine from vines near the railway line below Nuits Saint Georges. Fermented partly in stainless steel tanks and partly in large oak foudres. Ripe and fleshy with masses of peachy fruit and a succulent finish. Drink 2024-2026.*

<b>Bourgogne Côte d'Or Chardonnay</b>	<b>BA2</b>	6x75cl	13	22.00	94.00
---------------------------------------	------------	--------	----	-------	-------

*Vinified in oak ranging from 400 litre casks to large oak foudres. Rich and spicy with honeyed fruit and a lingering aftertaste. Drink 2024-2026.*

<b>Bourgogne Hautes Côtes de Nuits blanc</b>	<b>BA3</b>	6x75cl	13	22.00	94.00
--	------------	--------	----	-------	-------

*Fermented and aged for 12 months in 400 litre oak barrels (20% new) from tonnellerie Billon. The fruit comes from a vineyard just above Nuits Saint Georges where the higher altitude enables the grapes to retain excellent acidity. Crisp and fresh with bold, opulent flavours of ripe fruit and a touch of spicy oak. Drink 2024-2026.*

<b>Saint Romain</b>	<b>BA4</b>	6x75cl	13	31.00	139.00
---------------------	------------	--------	----	-------	--------

*Vinified in 300 litre oak casks, 30% of which are new. Rich and stylish with a succulent, ripe texture and a long, concentrated finish. Drink 2024-2027.*

## Red

<b>Coteaux Bourguignons Lettre d'Eloïse Pinot Noir</b>	<b>BA5</b>	6x75cl	13	19.00	79.00
--	------------	--------	----	-------	-------

*A lovely introduction to the domaine's wines. Vinified partly in stainless steel and partly in oak this is ripe and fruity and comes from the estate's vines on the lower, more fertile soil near the railway line just below Nuits Saint Georges. Designed to be drunk young with masses of fruit and less tannin, this is already delicious but will age gracefully. Drink 2024-2027.*

Red	Bin no.	CASE SIZE	% abv	£ per bottle DP Inc VAT	£ per case IN BOND
<b>Bourgogne Côte d'Or Pinot Noir</b>	<b>BA6</b>	6x75cl	13	22.00	94.00
<i>From vines in Nuits Saint Georges but just outside the appellation, this is 100% aged in oak, both 400 litre barrels and larger foudres. Rich, ripe and fruity with excellent depth and concentration. Drink 2025-2029.</i>					
<b>Côte de Nuits Villages</b>	<b>BA7</b>	6x75cl	13	31.00	139.00
<i>A great value wine from vines in the villages of Corgoloin and Comblanchien with the largest plot just a few hundred metres to the south of the famous Nuits Saint Georges 1er Cru Clos de la Maréchale. Rich and generous with sweet, red and black cherry fruit and a touch of spicy oak. Drink 2027-2032.</i>					
<b>Nuits Saint Georges</b>	<b>BA8</b>	6x75cl	13	41.00	189.00
<i>The size of the crop was reduced by a localised hailstorm in June which concentrated the flavour. Aged in 60% new oak barrels (both 228 and 400 litre), this is one of the most serious village wines that I tasted in 2022 with dark fruit and spicy aromas, firm but ripe tannins and a sweet, persistent aftertaste. Drink 2028-2034.</i>					
<b>Beaune 1er Cru Les Tuvilains</b>	<b>BA9</b>	6x75cl	13	53.00	249.00
<i>The domaine's most southerly red vineyard and the first grapes to be harvested in 2022. Ripe and sunny with glossy, opulent fruit and a warm, generous texture. Drink 2027-2032.</i>					
<b>Nuits Saint Georges 1er Cru En Rue de Chaux</b>	<b>BA10</b>	6x75cl	13	72.00	344.00
<i>The domaine owns just 0.11 hectares of this splendid premier cru that lies on the steep, stony slope adjacent to the road that leads, as the name implies, to the village of Chaux. With brooding, blackcurrant and blackberry fruit and a close-knit texture, this is one of the most backward wines in the cellar but will age magnificently. Drink 2029-2036.</i>					
<b>Nuits Saint Georges 1er Cru Les Vaucrains</b>	<b>BA11</b>	6x75cl	13	75.00	359.00
<i>Widely regarded, along with Les Saint Georges, to be the finest premier cru of the appellation. Full-bodied, concentrated wine with sweet cassis and spice and firm but ripe tannins. Drink 2029-2038.</i>					
<b>Corton Le Rognet</b>	<b>BA12</b>	6x75cl	13	82.00	394.00
<i>The hill of Corton produces the best value red grands crus in the Côte d'Or. Le Rognet lies on the east-facing slope above the village of Ladoix and gives wonderful, rich, opulent wines. This is full of red and black fruits and is aged in 100% new oak barrels from tonnelleries Billon, Remond and Tremeaux. Drink 2029-2038.</i>					
<b>Clos Vougeot</b>	<b>BA13</b>	6x75cl	13	164.00	804.00
<i>Sumptuous, concentrated wine from the higher Grand Maupertuy section of the clos. Aged in new 228 litre barrels from Tremeaux. Full of dark cherry fruit whilst retaining fine freshness and vitality. Drink 2029-2038.</i>					

# Domaine Lécheneaut

Vincent Lécheneaut's son Jules has now joined the family estate which comprises 10 hectares of prime vineyards in nearly all the famous villages of the Côte de Nuits. The vines are currently being converted to organic viticulture and will be certified as such from the 2023 vintage.

In 2022, the harvest was early, starting on 1st September while the weather was still warm and sunny. Vincent chilled all the grapes to 5C in a cold room before filling the vats and included between 30 and 50% whole bunches. Ageing is almost exclusively in 228 litre pièces supplied by François Frères with a few barrels from Montgillard and Rousseau.



Red	Bin no.	CASE SIZE	% abv	£ per bottle DP Inc VAT	£ per case IN BOND
<b>Bourgogne Hautes Côtes de Nuits</b>	<b>LE1</b>	6x75cl	13	28.00	124.00
<i>The Hautes Côtes was especially successful in 2022 and this is a fine example, combining the richness of the Côte d'Or with the freshness and vitality of the Hautes Côtes. A lean, stylish wine with lovely, redcurrant and raspberry fruit. Drink 2025-2029.</i>					
<b>Côte de Nuits Villages Le Clos de Magny</b>	<b>LE2</b>	6x75cl	13.5	36.00	164.00
<i>From 50+ year old vines in Corgoloin just to the south of Nuits. This is rich and vibrant with beautiful spicy fruit, a touch of oak and a long aftertaste. Drink 2026-2030.</i>					
<b>Marsannay La Côte Les Sampagny</b>	<b>LE3</b>	6x75cl	13.5	38.00	174.00
<i>A full-bodied, gutsy wine from the northernmost appellation of the Côte de Nuits. Rich and tannic with masses of dark cherry fruit. Drink 2027-2031.</i>					
<b>Morey Saint Denis</b>	<b>LE4</b>	6x75cl	13.5	49.00	229.00
<i>Sandwiched between Gevrey-Chambertin and Chambolle-Musigny, Morey is currently the best value village in the Côte de Nuits. The Lécheneaut vines lie in the Pierre Vivant climat immediately above the grand cru of Clos Saint Denis. A lovely, fresh aromatic wine with beautiful red fruit and a touch of spice. Finishes long and sweet. Drink 2027-2032.</i>					
<b>Gevrey-Chambertin</b>	<b>LE5</b>	6x75cl	13.5	51.00	239.00
<i>A superb blend from two complementary parcels, Seuvrées on the Morey border where the sandy soil gives a fresh, aromatic wine and Charreux whose clay soil adds structure and longevity. Drink 2028-2034.</i>					

Red	Bin no.	CASE SIZE	% abv	£ per bottle DP Inc VAT	£ per case IN BOND
<b>Vosne-Romanée</b>	<b>LE6</b>	6x75cl	13	58.00	274.00
<i>This comes from Les Raviolles, one of the finest climats of Vosne. Pure fruit, silky tannins and excellent length. Drink 2028-2034.</i>					
<b>Chambolle-Musigny</b>	<b>LE7</b>	6x75cl	13.5	58.00	274.00
<i>The domaine owns six small parcels in Chambolle which are vinified together to make this sumptuous cuvée which shows beautiful, fresh red fruits, a succulent texture and a long, sweet finish. Drink 2027-2034.</i>					
<b>Morey Saint Denis Clos des Ormes</b>	<b>LE8</b>	6x75cl	13.5	63.00	299.00
<i>The Lécheneauts own land in the famous premier cru of Clos des Ormes that is not classified as such, so this wonderful wine has to be sold with the village appellation. Rich and elegant with beautiful, fresh, raspberry and cherry fruit, a close-knit texture and a fine aftertaste. Drink 2028-2035.</i>					
<b>Aloxe-Corton 1er Cru Petites Lolières</b>	<b>LE9</b>	6x75cl	14.5	72.00	344.00
<i>Perfectly situated on the hill of Corton surrounded by grands crus. East-facing so captures all the morning sun and gives a rich, generous wine with juicy fruit and fresh acidity. Drink 2027-2033.</i>					
<b>Nuits Saint Georges 1er Cru Aux Argillas</b>	<b>LE10</b>	6x75cl	13.5	82.00	394.00
<i>From 0.17 hectares of 50 year old vines, this is the freshest and most open of the domaine's premier crus. With elegant red fruits and excellent acidity, this is a lean, refined Nuits of exquisite harmony and class. Drink 2027-2035.</i>					
<b>Morey Saint Denis 1er Cru Les Charrières</b>	<b>LE11</b>	6x75cl	14	90.00	434.00
<i>One of Morey's finest premier crus, situated immediately below Clos de la Roche. Complex, succulent, dark fruits, fine tannins and fresh acidity. Drink 2029-2036.</i>					
<b>Nuits St Georges 1er Cru Clos Corvées Pagets</b>	<b>LE12</b>	6x75cl	14.5	90.00	434.00
<i>From a heavier clay soil that gives a solid, gutsy wine that has remarkable purity of fruit and an impressive, long finish. Drink 2029-2036.</i>					
<b>Chambolle-Musigny 1er Cru Les Borniques</b>	<b>LE13</b>	6x75cl	13	100.00	484.00
<i>This is a mini-Musigny, sharing the same elegant character as its famous neighbour. Fresh and precise with sumptuous fruit and amazing vitality. Drink 2029-2036.</i>					
<b>Clos de la Roche</b>	<b>LE14</b>	6x75cl	13.5	225.00	1109.00
<i>The Lécheneauts made only one 350 litre barrel (from tonnellerie Montgillard) of this grand cru. Rich and concentrated, this is tight and backward at present but will age magnificently. Drink 2030-2038.</i>					

# Domaine Jacques Cacheux et Fils

Patrice and his son, Charles, continue to harvest relatively late at full maturity, destem all the grapes and practise a careful extraction of tannin with the minimum of *pigeage*. All the barrels come from *tonnellerie* François Frères in Saint Romain and the style remains one of rich, ripe fruit allied to just the right amount of new oak.

After tiny yields in 2021, Patrice harvested a good-sized crop (35hl/ha) and has made beautiful, rich, juicy wines that include some magnificent Vosne-Romanée *lieux-dits* that were vinified separately.



Red	Bin no.	CASE SIZE	% abv	£ per bottle DP Inc VAT	£ per case IN BOND
<b>Nuits Saint Georges Au Bas de Combe</b>	<b>CA1</b>	6x75cl	13	50.00	234.00
<i>This splendid climat lies closer to Vosne-Romanée than Nuits Saint Georges and unsurprisingly, makes a fine, elegant, harmonious wine with juicy fruit, a succulent texture and long finish. Drink 2027-2031.</i>					
<b>Vosne-Romanée</b>	<b>CA2</b>	6x75cl	13	56.00	264.00
<i>From a number of plots that are too small to be vinified separately. This is ripe and generous with beautiful red cherry and blackcurrant fruit and a touch of spicy oak. Drink 2027-2032.</i>					
<b>Vosne-Romanée Les Chalandins</b>	<b>CA3</b>	6x75cl	13	61.00	289.00
<i>From the northern end of the appellation bordering Vougeot. Rich and spicy with red and black cherry fruit. Lean and mineral on the finish. Drink 2027-2033.</i>					
<b>Vosne-Romanée Aux Réas</b>	<b>CA4</b>	6x75cl	13	62.00	294.00
<i>Fine climat adjacent to, and at the same level on the slope as, premiers crus Chaumes and Clos de Réas. Rich and satisfying with redcurrant and blackberry fruit, firm but ripe tannins and a persistent aftertaste. Drink 2028-2034.</i>					
<b>Echezeaux</b>	<b>CA5</b>	6x75cl	13.5	190.00	934.00
<i>10 barrels produced of this magnificent grand cru, deep and concentrated with dark cherry fruit, a touch of spicy oak and a generous, sweet aftertaste. Drink 2028-2035.</i>					
<b>Vosne-Romanée 1er Cru La Croix Rameau</b>	<b>CA6</b>	6x75cl	13.5	200.00	984.00
<i>This magnificent 0.6 hectare premier cru forms an enclave in the grand cru of Romanée Saint Vivant. Only three barrels produced in 2022 of which one was new. Wonderful precision and intensity with a rich, succulent texture and crisp, mineral finish. Drink 2028-2035.</i>					



# Domaine des Perdrix

2022 was the first vintage to be vinified in the domaine's new cellars in the centre of the town of Nuits Saint Georges. Oenologist and wine-maker, Carole Briffox, who has been at the domaine since 2019, continues to refine the style, introducing a percentage of whole bunches, reducing the amount of new oak and aiming to extract only the finest and ripest tannins. The 2022 vintage is her most triumphant so far with bright fruit flavours allied to rich, succulent textures. Ageing is for 15-18 months in barrels from François Frères, Dargaud & Jaegle, Mercurey and Taransaud.



Red	Bin no.	CASE SIZE	% abv	£ per bottle DP Inc VAT	£ per case IN BOND
-----	---------	-----------	-------	-------------------------	--------------------

## Vosne-Romanée

<b>PE1</b>	6x75cl	14	78.00	374.00
------------	--------	----	-------	--------

The domaine owns a magnificent parcel of 60+ year old vines in Quartier de Nuits, half of which is classified as grand cru Echezeaux and half as Vosne-Romanée. Some of the fruit is fermented as whole bunches and all is then aged in oak barrels of which one third are new. Well-structured, powerful wine with dense, concentrated red cherry and blackcurrant fruit balanced by lovely, fresh acidity. Drink 2027-2033.

## Nuits Saint Georges 1er Cru Terres Blanches

<b>PE2</b>	6x75cl	14	96.00	464.00
------------	--------	----	-------	--------

A beautiful, fresh, vibrant wine full of red and black cherry fruit from this fine premier cru that lies on lighter, stonier soil at the top of the slope above the village of Prémieux. Lean and mineral with less exuberance but impressive length and vitality. Drink 2028-2034.

## Nuits Saint Georges 1er Cru Aux Perdrix

<b>PE3</b>	6x75cl	13.5	97.00	469.00
------------	--------	------	-------	--------

The Devillards own 356 out of the 360 rows of vines in this 3.5 hectare premier cru. Much of the 'quasi-monopole' is planted at the unusually high density of 13,000 vines per hectare and gives a rich, sumptuous wine of extraordinary depth and concentration. Drink 2028-2035.

## Nuits Saint Georges 1er Cru Aux Perdrix Les 8 Ouvrées

<b>PE4</b>	6x75cl	14	138.00	674.00
------------	--------	----	--------	--------

The oldest vines in Aux Perdrix date from 1922 and the grapes from this venerable plot which extends over 8 ouvrées (1 ouvrée = 0.0428 hectares) are vinified separately and give this magnificent, intense, brooding wine that is consistently one of the very finest Nuits. Ripe and opulent whilst retaining fine freshness and vitality. Drink 2029-2036.

## Echezeaux

<b>PE5</b>	6x75cl	14	234.00	1154.00
------------	--------	----	--------	---------

From two plots totalling 1 ha in Echezeaux-Dessus and Quartier de Nuits. The amount of new oak has been reduced over the past few years from 100% to 60% and this is a beautiful, creamy, generous wine with the accent on purity of fruit and length on the finish. Drink 2030-2038.

# Domaine Chevillon-Chezeaux

Claire Chevillon and Philippe Chezeaux are the 5th generation to run their share of the Chevillon family vines. Prior to 2000 the estate was known as Domaine Michel Chevillon (Claire's father). Today the property extends over 8 hectares including nearly 2 hectares of five Nuits premiers crus. Philippe is responsible for the wine-making which remains largely traditional. The fruit is hand-harvested, 100% destemmed, crushed lightly and given 5-7 days of cold (10C) maceration prior to fermentation. The total cuvaison typically lasts 18-21 days followed by ageing for 15-18 months in French oak barrels (20-25% new). The 2022s were harvested from 2nd to 9th September and include many of Philippe's best ever wines; rich and characterful with full-bodied structures and intense flavours.



Red	Bin no.	CASE SIZE	% abv	£ per bottle DP Inc VAT	£ per case IN BOND
<b>Bourgogne Pinot Noir Maladières</b>	<b>CC1</b>	6x75cl	12.5	22.00	94.00
<i>The domaine owns 1.17 hectares of this fine vineyard that lies below the Nuits premier cru of Les Roncières. Much of it is classified as Nuits Saint Georges but the Chevillon vines are in the lower section and only allowed the Bourgogne appellation. Ripe and stylish with open, red cherry and raspberry fruit and a hint of oak. Fresh and succulent on the palate and harmonious on the finish. Drink 2025-2029.</i>					
<b>Nuits Saint Georges Vieilles Vignes</b>	<b>CC2</b>	6x75cl	12.5	42.00	194.00
<i>From 1.2 hectares of vines on the northern, Vosne-Romanée side of Nuits where the wine are more elegant. A beautiful, stylish wine with seductive red and black fruits and ripe tannins. Drink 2026-2031.</i>					
<b>Vosne-Romanée La Croix Blanche</b>	<b>CC3</b>	6x75cl	13	55.00	259.00
<i>Small, 0.3 hectare parcel that gives just six barrels of fine, expressive Vosne. Rich and juicy with precise fruit and high quality tannins. Drink 2026-2031.</i>					
<b>Nuits Saint Georges 1er Cru Champs Perdrix</b>	<b>CC4</b>	6x75cl	13	60.00	284.00
<i>One of the smallest Nuits premiers crus of which the domaine owns nearly half. High on the slope, it gives a fresh, aromatic, elegant wine with pure red cherry fruit. Drink 2027-2032.</i>					
<b>Nuits Saint Georges 1er Cru Porets Saint Georges</b>	<b>CC5</b>	6x75cl	13	66.00	314.00
<i>From the southern side of Nuits where there is more clay in the soil and the wines are firmer and more tannic. Dense and chewy with great power and a long aftertaste. Drink 2029-2034.</i>					
<b>Nuits Saint Georges 1er Cru Les Saint Georges</b>	<b>CC6</b>	6x75cl	13	99.00	479.00
<i>The finest and most famous premier cru of Nuits and a candidate for elevation to grand cru status. Intensely flavoured with concentrated black cherry and brambly fruit, firm but ripe tannins and a tight, dense texture. Drink 2029-2035.</i>					

# Château de Laborde

Hervé Kerlann bought the Château de Laborde in 1998 and set about renovating the run-down estate. He restored the château, expanded the vineyards and in 2016 built a new winery in which to vinify the 9 hectares of vines that now cover many of the finest climats of Gevrey-Chambertin and Chambolle Musigny. Vinification is traditional; the fruit is destemmed and then fermented at a relatively cool temperature in order to extract only the finest tannins. The wines are then aged for 12-18 months in 228 litre Burgundian pièces from tonnelleries Rousseau, Damy and Montgillard. The 2022s are a splendid range of rich, vibrant wines that are amongst the finest that Hervé has made to date.



## Bourgogne Côte d'Or Au Prunier

Bin no.	CASE SIZE	% abv	£ per bottle DP Inc VAT	£ per case IN BOND
<b>LA1</b>	6x75cl	13	27.00	119.00

*Small (0.3 hectares) but splendidly-sited parcel of old vines that lies just outside the Gevrey appellation between the village and the Complexe Sportif. The vines are looked after and the wine vinified with the same care as the estate's more prestigious crus and is great value. Rich and aromatic with generous fruit and supple tannins. Drink 2025-2029.*

## Gevrey-Chambertin Vieilles Vignes

<b>LA2</b>	6x75cl	13.5	55.00	259.00
------------	--------	------	-------	--------

*A selection of plots planted with 50+ year old vines. Hervé aims to extract the maximum of fruit and only the ripest of tannins. The 2022 is a great success combining rich, vibrant, red and black fruits with fine tannins and lovely, fresh acidity. Drink 2026-2031.*

## Gevrey-Chambertin En Derée

<b>LA3</b>	6x75cl	13.5	61.00	289.00
------------	--------	------	-------	--------

*From the northern side of Gevrey where the soil is heavier with more clay and the estate has a magnificent plot of 70 year old vines. Dense and concentrated with splendid red cherry and blackberry fruit, firm but ripe tannins and a lingering finish. Drink 2027-2032.*

## Chambolle-Musigny

<b>LA4</b>	6x75cl	13.5	63.00	299.00
------------	--------	------	-------	--------

*A beautiful, forward, succulent wine of immense charm and sophistication. Lovely, ripe raspberry fruit, silky tannins and a long, sweet aftertaste. Drink 2026-2031.*

## Gevrey-Chambertin 1er Cru Les Goulots

<b>LA5</b>	6x75cl	13.5	79.00	379.00
------------	--------	------	-------	--------

*A fabulous premier cru at high altitude that does particularly well in hot summers. On the same hillside as Clos Saint Jacques, it shares many characteristics; freshness, vitality and purity of fruit. Drink 2027-2033.*

## Gevrey-Chambertin 1er Cru Les Corbeaux

<b>LA6</b>	6x75cl	13.5	82.00	394.00
------------	--------	------	-------	--------

*Magnificently situated adjacent to Mazis-Chambertin, this is similarly dense and concentrated with immense structure and firm tannins. Backward at present but with fine ageing potential. Drink 2028-2034.*

# Domaine Michel Magnien

Frédéric Magnien is the fifth generation to run the family estate. Since he took over in 1996, he has expanded the domaine from 4 to 18 hectares with the whole estate being farmed biodynamically since 2010. Frédéric continues to develop the range of vessels that he uses for ageing the wines and this year has added new 225 litre clay jars to his existing stock of 228 litre oak barrels, smaller 160 litre clay jars and larger 350 litre terracotta amphorae made by TAVA in Italy. His aim is to have approximately half of each wine aged in barrel and half in the more neutral clay vessels.



Red	Bin no.	CASE SIZE	% abv	£ per bottle DP Inc VAT	£ per case IN BOND
<b>Bourgogne Côte d'Or Pinot Noir</b>	<b>MM1</b>	6x75cl	13	28.00	124.00
<i>This splendid cuvée includes the vin de presse from many of the domaine's premiers and grands crus in addition to the wine from parcels in the communes of Morey St Denis and Gevrey-Chambertin. Rich and serious with excellent depth and vitality. A high-quality, generous wine that will age gracefully. Drink 2026-2030.</i>					
<b>Côte de Nuits Villages</b>	<b>MM2</b>	6x75cl	13	38.00	174.00
<i>From the village of Brochon, immediately to the north of Gevrey-Chambertin. Rich and juicy with fresh red and black cherry fruit and a ripe, succulent finish. Drink 2027-2031.</i>					
<b>Fixin</b>	<b>MM3</b>	6x75cl	13	41.00	189.00
<i>From two plots (Mogottes and Champs des Charmes) that Frédéric vinifies together. A dense, rich, serious wine with beautiful dark fruits, firm but ripe tannin and fresh acidity. Drink 2028-2032.</i>					
<b>Marsannay Mogottes</b>	<b>MM4</b>	6x75cl	13	41.00	189.00
<i>A monopole of the domaine, this has bright red cherry and blackberry fruit and a touch of spice. Fresh and elegant with a long, lingering finish. Drink 2027-2032.</i>					
<b>Morey Saint Denis</b>	<b>MM5</b>	6x75cl	13	53.00	249.00
<i>From plots (Clos Solon, Bas Chenevery, Cognées) just below the premiers crus, this is quintessential Morey which combines the strength of Gevrey with the charm of Chambolle. Rich and juicy with masses of red and black fruits. Drink 2028-2033.</i>					
<b>Gevrey-Chambertin Sevrées Vieilles Vignes</b>	<b>MM6</b>	6x75cl	13	59.00	279.00
<i>The oldest vines, planted in 1942, in this excellent climat just across the route nationale from grand cru Mazoyères-Chambertin give a magnificent, full-bodied wine of at least premier cru quality. A dense, close-knit texture and firm but ripe tannins ensure a great future. Drink 2028-2034.</i>					

Red	Bin no.	CASE SIZE	% abv	£ per bottle DP Inc VAT	£ per case IN BOND
<b>Chambolle-Musigny Fremières</b>	<b>MM7</b>	6x75cl	13	72.00	344.00
<i>Fremières lies adjacent to premier cru Beaux Bruns and Noirots and makes a rich, full-bodied style of Chambolle. Dark fruits and ripe tannins are a satisfying combination resulting in a splendid generous, succulent wine. Drink 2028-2034.</i>					
<b>Morey Saint Denis 1er Cru Climats d'Or</b>	<b>MM8</b>	6x75cl	13	72.00	344.00
<i>A splendid premier cru fashioned from fruit grown in three fine premiers crus: Monts Luisants, Chaffots and Charrières. Rich and aromatic with masses of red cherries and blackberries. Full-bodied, gutsy wine with a long, fresh finish. Drink 2028-2035.</i>					
<b>Morey Saint Denis 1er Cru Aux Millandes</b>	<b>MM9</b>	6x75cl	13	73.00	349.00
<i>Millandes lies immediately below the grand cru of Clos de la Roche and makes a similar, sumptuous wine with beautiful, sweet fruit and a succulent texture. Impressive, long aftertaste. Drink 2028-2036.</i>					
<b>Morey Saint Denis 1er Cru Chaffots</b>	<b>MM10</b>	6x75cl	13	73.00	349.00
<i>The most structured and ageworthy of Magnien's premiers crus with firm but ripe tannins, a close-knit texture and a long, satisfying finish. Drink 2029-2037.</i>					
<b>Gevrey-Chambertin 1er Cru Cazefiers</b>	<b>MM11</b>	6x75cl	13	96.00	464.00
<i>Beautifully-sited vineyard adjacent to Clos Saint Jacques on the northern hillside of Gevrey-Chambertin that makes some of the richest, most muscly wines of the Côte de Nuits. Dense and concentrated with dark cherry and blackcurrant fruit and a tight structure. Will age magnificently. Drink 2029-2037.</i>					
<b>Chambolle-Musigny 1er Cru Sentiers</b>	<b>MM12</b>	6x75cl	13	111.00	539.00
<i>Beautiful, open, seductive wine that comes from a magnificent vineyard on the border with Morey Saint Denis immediately below the grand cru of Bonnes Mares. Lovely, vivid fruit and high quality, silky tannins make this quintessential Chambolle. Drink 2028-2037.</i>					
<b>Charmes-Chambertin</b>	<b>MM13</b>	6x75cl	13	183.00	899.00
<i>From the Mazoyères section of Charmes-Chambertin, this is the most forward of the domaine's grands crus with sweet, ripe fruit on both the nose and palate and a lovely, fresh, creamy aftertaste. Drink 2028-2037.</i>					
<b>Clos de la Roche</b>	<b>MM14</b>	6x75cl	13	197.00	969.00
<i>Magnificent, flamboyant wine with a wonderful juicy texture, a dense concentrated core and a long, lingering finish. A complete wine and one of the finest wines of the vintage. Drink 2028-2038.</i>					
<b>Clos Saint Denis</b>	<b>MM15</b>	6x75cl	13	240.00	1184.00
<i>More restrained than the Clos de la Roche but with equal tension and vitality. Has a tight, close-knit texture and an impressively long aftertaste. Demands patience but will be magnificent. Drink 2029-2038.</i>					

# Frédéric Magnien

As well as running the family estate (Domaine Michel Magnien), Frédéric buys grapes from many of the best growers in Morey and the surrounding villages which he vinifies in a separate cellar adjacent to the domaine. The majority of the farmers who supply grapes work organically or biodynamically but not all, so most of these wines are not labelled as such. The vinification is carried out with the same methods (partial destemming and ageing in both oak barrels and terracotta amphorae) and with the same care and attention as the domaine's wines and the results are equally impressive.



Frédéric Magnien

Red	Bin no.	CASE SIZE	% abv	£ per bottle DP Inc VAT	£ per case IN BOND
<b>Fixin Cœur de Violette</b>	<b>FM1</b>	6x75cl	13	37.00	169.00
<i>A rich, generous wine with vibrant, red cherry fruit and a succulent texture. Drink 2027-2030.</i>					
<b>Marsannay Longerois</b>	<b>FM2</b>	6x75cl	13	37.00	169.00
<i>One of the largest climats in Marsannay, lying mid slope just to the north of the village. Masses of red and black fruits together with a touch of spice. Drink 2027-2030.</i>					
<b>Gevrey-Chambertin Clos Prieur</b>	<b>FM3</b>	6x75cl	13	59.00	279.00
<i>Most of Clos Prieur is classified as premier cru but the lower section is not. Full and firm, tight at present but with the depth to age gracefully. Drink 2027-2031.</i>					
<b>Chambolle-Musigny Vieilles Vignes</b>	<b>FM4</b>	6x75cl	13	74.00	354.00
<i>From two plots of old vines in Condemennes and Guérippes. A lovely, juicy, elegant wine with velvety tannins and a long, succulent finish. Drink 2027-2032.</i>					

Red	Bin no.	CASE SIZE	% abv	£ per bottle DP Inc VAT	£ per case IN BOND
<b>Vosne-Romanée Aux Champs Perdrix</b>	<b>FM6</b>	6x75cl	13	81.00	389.00
<i>Champs Perdrix lies just above La Tâche and makes a similarly elegant wine. This is fresh and harmonious with beautiful, red cherry and blackberry fruit, high quality tannins and excellent acidity. Finishes long and sweet. Drink 2028-2032.</i>					
<b>Gevrey-Chambertin 1er Cru Lavaut St Jacques</b>	<b>FM7</b>	6x75cl	13	103.00	499.00
<i>Lavaut Saint Jacques lies immediately to the west of Clos Saint Jacques. A rich, opulent wine, full of splendid black cherry and cassis fruit. Full-bodied with plenty of ripe tannins and a sweet, succulent texture. A magnificent, gutsy wine. Drink 2028-2033.</i>					
<b>Chambolle-Musigny 1er Cru Baudes</b>	<b>FM8</b>	6x75cl	13	110.00	534.00
<i>Beautiful, harmonious wine from this neighbour of grand cru Bonnes Mares. Rich and spicy with blackberry fruit and a touch of oak, well-balanced by fresh acidity. Wonderful, sweet, lingering aftertaste. Drink 2028-2033.</i>					
<b>Gevrey-Chambertin 1er Cru Petite Chapelle</b>	<b>FM9</b>	6x75cl	13	124.00	604.00
<i>Finely structured, generous wine from this superb vineyard adjacent to grand cru Chapelle-Chambertin. One of the few Magnien wines to be aged exclusively in 228 litre Burgundian pièces, this is rich and spicy with dense, blackcurrant fruit and a long, ripe, succulent finish. Drink 2028-2033.</i>					
<b>Clos de Vougeot</b>	<b>FM10</b>	6x75cl	13	183.00	899.00
<i>Dense, concentrated wine full of dark fruits and firm but ripe tannins. A rich, flamboyant wine that needs time but will age magnificently. Drink 2029-2034.</i>					
<b>Charmes-Chambertin</b>	<b>FM11</b>	6x75cl	13	198.00	974.00
<i>From vines in both the Mazoyères (more clay and tannin) and Charmes (more chalk and minerality) sections of this famous grand cru. Wonderful combination of freshness and opulence - a complete wine. Drink 2029-2035.</i>					
<b>Chambertin-Clos de Bèze</b>	<b>FM12</b>	6x75cl	13	446.00	2214.00
<i>From the northern end of Clos de Bèze adjacent to Mazis-Chambertin. Rich and aromatic with beautiful fruit and a sumptuous texture. One of my wines of the vintage. Drink 2029-2037.</i>					
<b>Chambertin</b>	<b>FM13</b>	6x75cl	13	454.00	2254.00
<i>Full and firm with dark, dense, brooding fruit. Lovely spice and refined tannins. Builds to a magnificent, long finish. Drink 2029-2037.</i>					

# Domaine Heresztyn-Mazzini

Florence and Simon Heresztyn-Mazzini run one of the most improved domaines of Gevrey-Chambertin. Farmed biodynamically, they have produced an amazing run of vintages since they took over their share of the Heresztyn estate in 2012.

In 2022 the harvest ran from 6th to 12th September in perfect conditions and there was no need for chaptalisation as all the fruit was picked at between 12.5%-13.5% potential alcohol. The stems were ripe and healthy and a higher than usual proportion was retained with most of the top cuvées vinified with 90-100% whole bunches. The wines were aged in 20-50% new oak barrels principally from Tonnellerie Chassin.



Florence Heresztyn-Mazzini

Red	Bin no.	CASE SIZE	% abv	£ per bottle DP Inc VAT	£ per case IN BOND
<b>Bourgogne Pinot Noir</b>	<b>HM1</b>	6x75cl	13	33.00	149.00
<i>One of the finest Bourgognes I tasted this year. All from vines in the Champ Franc climat that is mostly classified as Gevrey-Chambertin. 100% destemmed, this is a rich and juicy wine with lovely, succulent red fruits, a harmonious texture and long, fresh finish. Drink 2026-2030.</i>					
<b>Côte de Nuits Villages En Queue de Hareng</b>	<b>HM2</b>	6x75cl	13	53.00	249.00
<i>A new wine for the domaine from a tiny 0.8 hectare plot that they acquired last year. Rich and full-bodied with beautiful, red and black cherry fruit, ripe tannins and a sweet aftertaste. Drink 2027-2032.</i>					
<b>Gevrey-Chambertin Vieilles Vignes</b>	<b>HM3</b>	6x75cl	13	64.00	304.00
<i>A full-bodied Gevrey from vines principally to the north of the appellation (Billard and Pierre-Vin). The heavier, clay soil and old vines give remarkable depth and concentration and this will age magnificently. Drink 2088-2034.</i>					
<b>Gevrey-Chambertin Vieilles Vignes Jouises</b>	<b>HM4</b>	6x75cl	13	69.00	329.00
<i>Fermented with 90% whole bunches from vines below the grands crus. Firm and gutsy with dark fruit and ripe tannins this demands patience but has masses of flavour and potential. Drink 2029-2035.</i>					



Red	Bin no.	CASE SIZE	% abv	£ per bottle DP Inc VAT	£ per case IN BOND
<b>Gevrey-Chambertin Vieilles Vignes Songes</b>	<b>HM5</b>	6x75cl	13	74.00	354.00
<i>100% whole bunches from two climats to the north of the village. Dense and rich this is a beautiful, complete wine with vibrant, pure fruit and carefully extracted tannins. Drink 2029-2035.</i>					
<b>Chambolle-Musigny</b>	<b>HM6</b>	6x75cl	13.5	83.00	399.00
<i>The first grapes to be picked in 2022, from two small parcels in Aux Echanges and Bas Doix. Vinified with 60% whole bunches and aged in 25% new oak barrels, this is ripe and open with glorious, silky tannins and soft, succulent fruit. Quintessential Chambolle. Drink 2027-2034.</i>					
<b>Gevrey-Chambertin 1er Cru Perrière</b>	<b>HM7</b>	6x75cl	13	125.00	609.00
<i>The domaine owns 0.37 hectares of this small but splendid premier cru that lies just below Mazis-Chambertin. It consistently produces one of the most elegant wines of Gevrey and the 2022 was vinified with 50% whole bunches in order to express the purity of the fruit. A lovely, ripe, harmonious wine that will age gracefully. Drink 2029-2035.</i>					
<b>Gevrey-Chambertin 1er Cru Goulots</b>	<b>HM8</b>	6x75cl	13	125.00	609.00
<i>Goulots lies high on the slope and gives a crisp, fresh, highly aromatic wine brimming with elegant red fruits. A splendid, lean wine with fine length and minerality. Drink 2029-2035.</i>					
<b>Morey Saint Denis 1er Cru Millandes</b>	<b>HM9</b>	6x75cl	13	125.00	609.00
<i>Combines the power of Champonnets with the grace of Goulots. A complete, harmonious wine that shows just how good the wines of Morey can be. Drink 2029-2036.</i>					
<b>Gevrey-Chambertin 1er Cru Champonnets</b>	<b>HM10</b>	6x75cl	13	133.00	649.00
<i>The most backward of the domaine's premiers crus, this has darker fruits and a deep, brooding texture. Vinified with 100% whole bunches, this has firm but ripe tannins that give a magnificent structure to the wine and will enable it to age spectacularly. Drink 2029-2036.</i>					
<b>Clos Saint Denis</b>	<b>HM11</b>	6x75cl	13.5	308.00	1524.00
<i>From a 0.23 ha plot of 40+ year old vines at the top of this magnificent grand cru that gave four barrels in 2022. Rich and creamy with a dense, close-knit texture. Aged in 50% new oak, this is one of the wines of the vintage. Drink 2029-2037.</i>					



## Domaine Rossignol-Trapet

Brothers Nicolas and David Rossignol converted to biodynamic viticulture in 2004. Their 13 hectare estate is one Burgundy's finest and owns a glittering array of premiers and grands crus. The 2022 harvest ran from 8th to 15th September with a good-sized (50hl/ha) crop of ripe, healthy fruit that required very little sorting or chaptalisation. Two thirds of the bunches were kept intact and there was no need for any pigeage during the *cuvaision*. The wines are aged in barrel for 12-18 months with the percentage of new oak ranging from 15% for the village wines to 50% for the grands crus.

Red	Bin no.	CASE SIZE	% abv	£ per bottle DP Inc VAT	£ per case IN BOND
<b>Gevrey-Chambertin Vieilles Vignes</b>	<b>RT1</b>	6x75cl	13	55.00	259.00
<i>A selection of the oldest (50-85 years) vines in the three lieux-dits: Village, Crais and Jouse. Aged in 20% new oak barrels, this is ripe and aromatic with beautiful, red and black fruits, a touch of spicy oak and a rich, juicy texture. Finishes fresh and long. Drink 2027-2032.</i>					
<b>Beaune 1er Cru Les Teurons</b>	<b>RT2</b>	6x75cl	13	59.00	279.00
<i>After a devastating frost in 2021, these vines gave generously in 2022. The early-ripening site produces a sumptuous, rich, open wine full of glossy fruit and a sweet, succulent aftertaste. Drink 2027-2032.</i>					
<b>Gevrey-Chambertin 1er Cru Clos Prieur</b>	<b>RT3</b>	6x75cl	13	120.00	584.00
<i>Splendid premier cru that lies immediately below Mazis-Chambertin. Rich and spicy with opulent fruit and a generous finish. Drink 2027-2034.</i>					
<b>Gevrey-Chambertin 1er Cru Petite Chapelle</b>	<b>RT4</b>	6x75cl	13	120.00	584.00
<i>The cooler, clay soil gives both structure and vitality. A solid, full-bodied wine with excellent depth and muscle. Drink 2028-2035.</i>					
<b>Latricières-Chambertin</b>	<b>RT5</b>	6x75cl	13	235.00	1159.00
<i>The most southerly and coolest of the grands crus due to the cold air that descends from the Hautes Côtes. Fresh and vibrant with lovely, savoury fruit, a silky texture and excellent acidity. Drink 2028-2036.</i>					
<b>Chapelle-Chambertin</b>	<b>RT6</b>	6x75cl	13	235.00	1159.00
<i>Planted in 1924, these venerable vines give a dense, full-bodied wine of remarkable power and concentration. Drink 2029-2037.</i>					
<b>Chambertin</b>	<b>RT7</b>	6x75cl	13	390.00	1934.00
<i>The Rossignols are one of the biggest producers of Chambertin with 1.6 hectares of vines in the central section of this magnificent grand cru. A fabulous, complete wine combining beautiful pure fruit, silky tannins and a long, lingering finish. Drink 2029-2038.</i>					





# Montrachet Fine Wine Merchants

11 CATHERINE PLACE  
WESTMINSTER  
LONDON SW1E 6DX

020 7821 1337

[office@montrachetwine.com](mailto:office@montrachetwine.com)